

THINK SECURITY  
THINK CP PLUS

 **CP PLUS**



# the portfolijo

**2017**  
Version 1.0



[www.cpplusworld.com](http://www.cpplusworld.com)

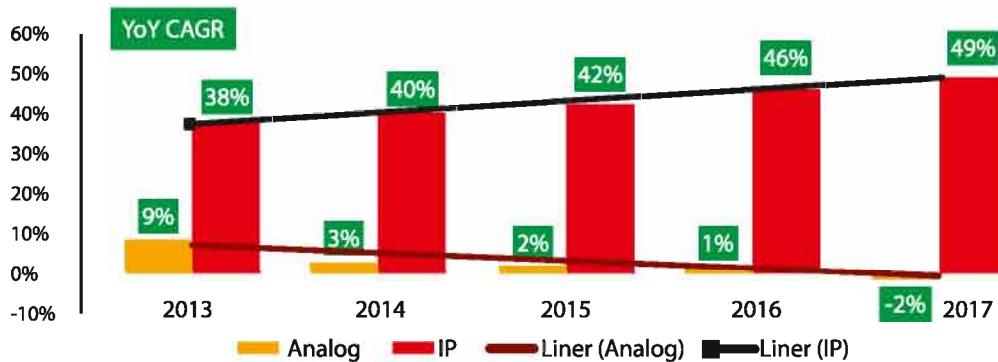
Real Time Monitoring

ANYWHERE  
ANYTIME



## Robust Growth

With an increasing acceptance of IP Surveillance Technology in global market, the industry is also showing a progressive growth trend at a CAGR of 40% as compared to declining inclination of analog technology.



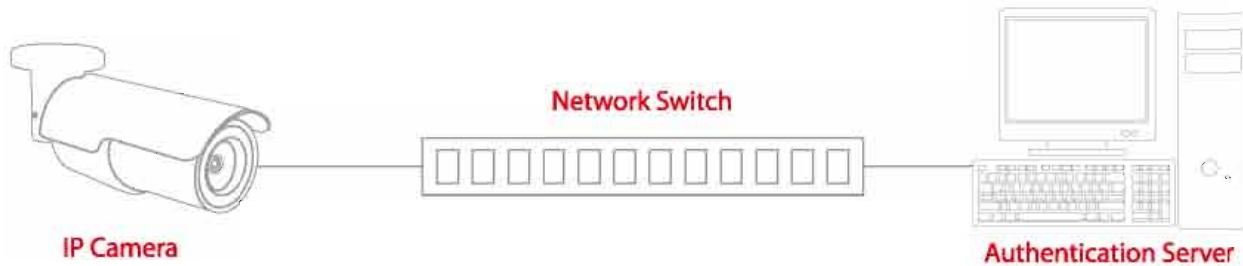
## High Definition Resolution

Requirements for high-resolution have become very common within surveillance applications now days. Network cameras helps in providing better resolutions, wider coverage images and exceptional details in expanded surveillance environments; hence better recognition and identification.



# Secured Communication

In IP based Surveillance scenario, the camera can encrypt the video being sent over the network to make sure it cannot be altered and tampered. Web based viewing is supported by password authentication and HTTPS encryption which is the most secured way of communication.



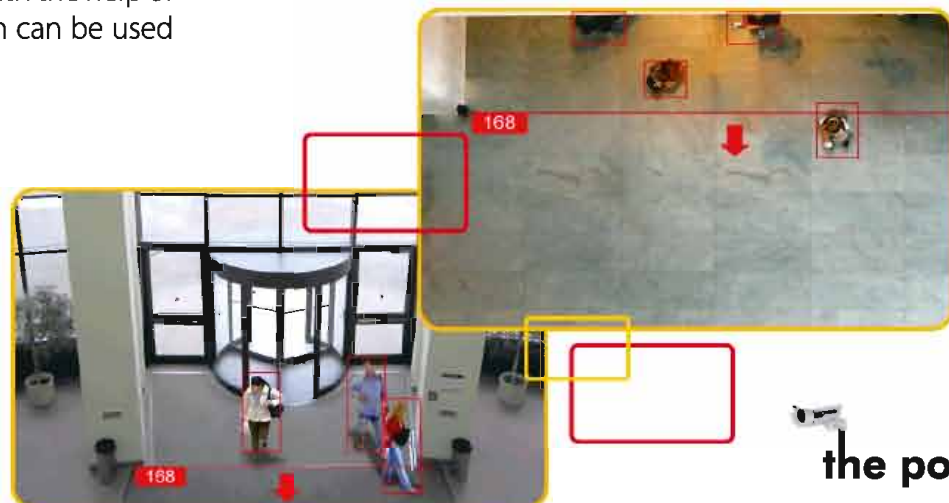
# Flexible Deployment

IP based Surveillance system is easy to install where IP Cameras and other devices can be connected over POE, which further simplifies the installation since only one cable is required for Audio, Video transmission, Power and Network



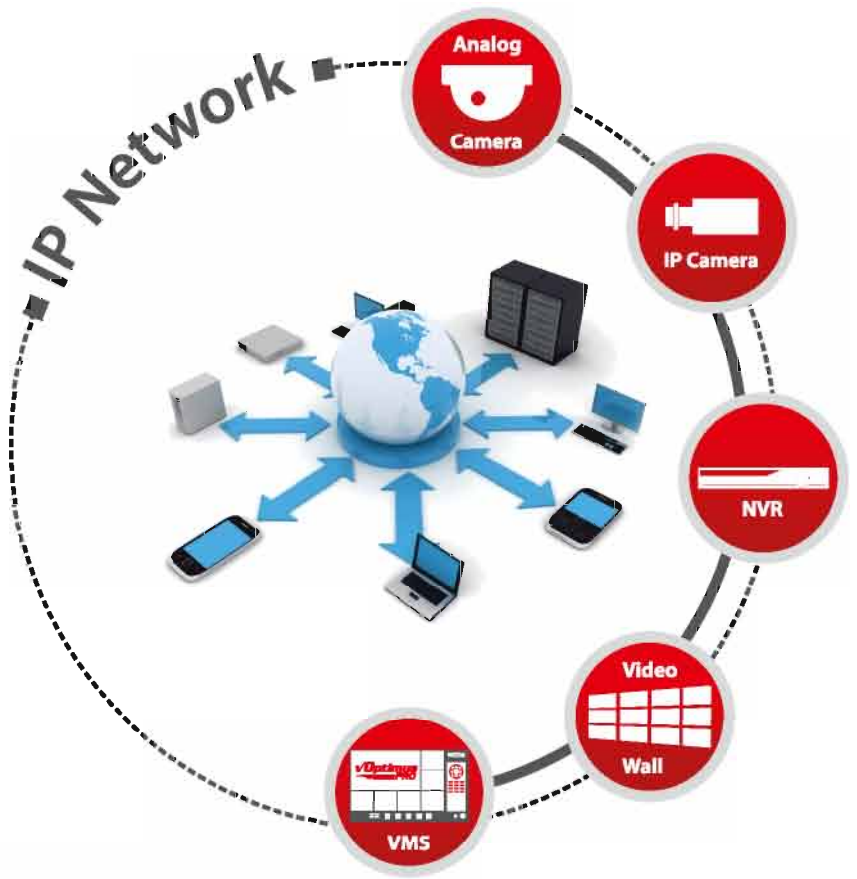
# Intelligent Camera

IP Surveillance helps to achieve business intelligence and reduced TCO with the help of intelligent video analytics which can be used in different industry segments.

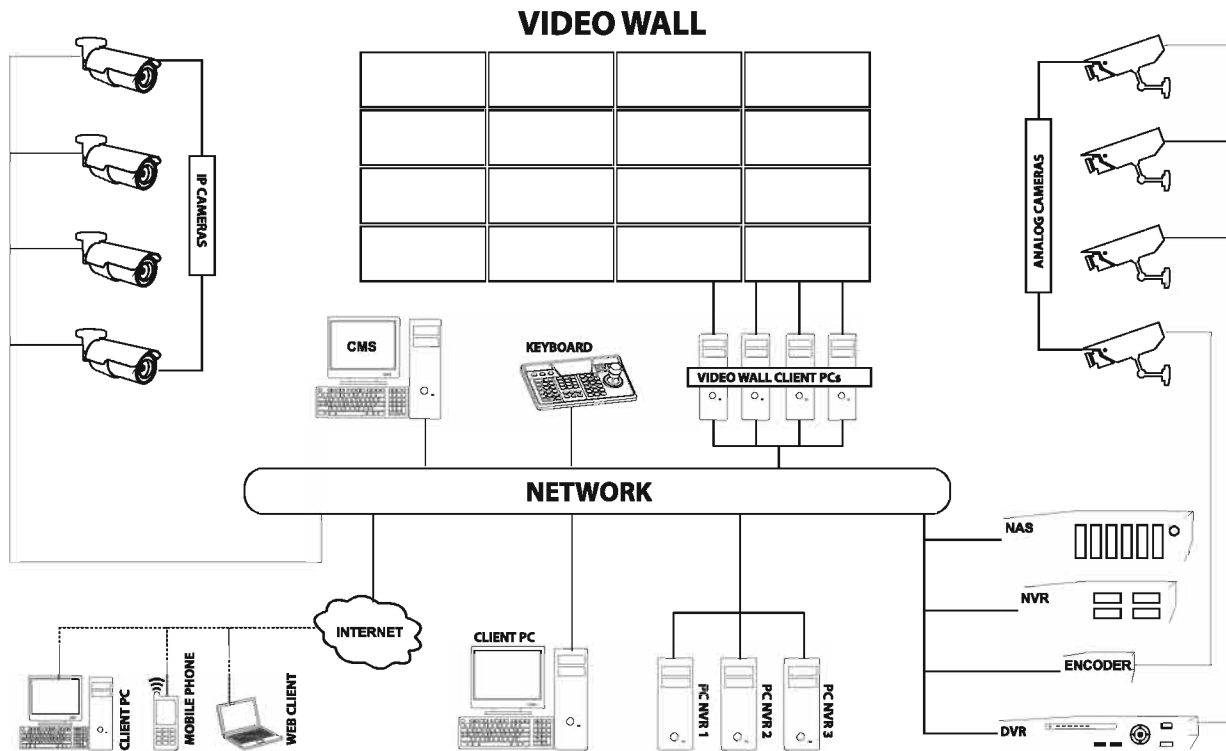


# Open Platform

With an open platform, Video Surveillance is no longer just about cameras and storage devices. It is about overall security- centralizing organizations surveillance and integrating the same with other security solutions for complete security network.



# Architecture





CP Plus offers an extensive portfolio of the finest end to end IP Video Surveillance solution. CP Plus IP based Surveillance provides several benefits like

- ■ Extended Support (Pre-Sales & Post-Sales Support)
- ■ Exceptional Technology
- ■ Profitable Partnerships
- ■ Proven Track Record & Recognised Installations
- ■ End to End Solution
- ■ Freedom to Choose: Open API/SDK platform; Integration with 3rd party Video Management Software, Access control, PoS, Intrusion

Low bit rate requirement with high image quality

- ■ Save 75% Disk Space & Save 75% Bandwidth

Ultra 3D DNR supported

- ■ Provide bright, low noise, clear picture in low light conditions

Save 50% power consumption

- ■ Green and Long Life

Presenting a world-class range of

## IP Surveillance Solutions



### CP-VCG-SD10L2

1 MP Cosmic IR Dome Camera - 20 Mtr.



- Features:
- 1 MP HQIS Pro Image Sensor
  - HD & SD Switchable, OSD menu over Coaxial cable
  - Max 25/30fps@720P
  - 3.6mm fixed lens (2.8mm optional)
  - Compatible with HDx, AHD, HDCVI, CVBS and HDTVI DVRs
  - Day/Night(ICR), AWB, AGC, BLC
  - Max. IR LEDs length 20m

### CP-VCG-SD10L3

1 MP Cosmic IR Dome Camera - 30 Mtr.



- Features:
- 1 MP HQIS Pro Image Sensor
  - HD & SD Switchable, OSD menu over Coaxial cable
  - Max 25/30fps@720P
  - 6 mm Lens
  - Compatible with HDx, AHD, HDCVI, CVBS and HDTVI DVRs
  - Day/Night(ICR), AWB, AGC, BLC
  - Max. IR LEDs length 30m

### CP-VCG-SD10FL4

1 MP Cosmic IR VF Dome Camera - 40 Mtr.



- Features:
- 1 MP HQIS Pro Image Sensor
  - HD & SD Switchable, OSD menu over Coaxial cable
  - Max 25/30fps@720P
  - 2.8 ~ 12mm Varifocal Lens
  - Compatible with HDx, AHD, HDCVI, CVBS and HDTVI DVRs
  - Day/Night(ICR), AWB, AGC, BLC
  - Max. IR LEDs length 40m

### CP-VCG-ST10L2C

1 MP Cosmic IR Bullet Camera - 20 Mtr.



- Features:
- 1 MP HQIS Pro Image Sensor
  - HD & SD Switchable, OSD menu over Coaxial cable
  - Max 25/30fps@720P
  - 3.6mm Lens
  - Compatible with HDx, AHD, HDCVI, CVBS and HDTVI DVRs
  - Day/Night(ICR), AWB, AGC, BLC
  - Max. IR LEDs length 20m, IP66

### CP-VCG-ST10L2

1 MP Cosmic IR Bullet Camera - 20 Mtr.



- Features:
- 1 MP HQIS Pro Image Sensor
  - HD & SD Switchable, OSD menu over Coaxial cable
  - Max 25/30fps@720P
  - 3.6mm fixed lens (2.8mm optional)
  - Compatible with HDx, AHD, HDCVI, CVBS and HDTVI DVRs
  - Day/Night(ICR), AWB, AGC, BLC
  - Max. IR LEDs length 20m, IP66

### CP-VCG-ST10L3

1 MP Cosmic IR Bullet Camera - 30 Mtr.



- Features:
- 1 MP HQIS Pro Image Sensor
  - HD & SD Switchable, OSD menu over Coaxial cable
  - Max 25/30fps@720P
  - 6 mm Lens
  - Compatible with HDx, AHD, HDCVI, CVBS and HDTVI DVRs
  - Day/Night(ICR), AWB, AGC, BLC
  - Max. IR LEDs length 30m, IP66

### CP-VCG-ST10FL5

1 MP Cosmic IR VF Bullet Camera - 50 Mtr.



- Features:
- 1 MP HQIS Pro Image Sensor
  - HD & SD Switchable, OSD menu over Coaxial cable
  - Max 25/30fps@720P
  - 2.8 ~ 12mm Varifocal Lens
  - Compatible with HDx, AHD, HDCVI, CVBS and HDTVI DVRs
  - Day/Night(ICR), AWB, AGC, BLC
  - Max. IR LEDs length 50m, IP66

### CP-VCG-ST10R5

1 MP Cosmic IR Bullet Camera - 50 Mtr.



- Features:
- 1 MP HQIS Pro Image Sensor
  - HD & SD Switchable, OSD menu over Coaxial cable
  - Max 25/30fps@720P
  - 8 mm Lens
  - Compatible with HDx, AHD, HDCVI, CVBS and HDTVI DVRs
  - Day/Night(ICR), AWB, AGC, BLC
  - Max. IR LEDs length 50m, IP66

### CP-VCG-ST10R7

1 MP Cosmic IR Bullet Camera - 70 Mtr.



- Features:
- 1 MP HQIS Pro Image Sensor
  - HD & SD Switchable, OSD menu over Coaxial cable
  - Max 25/30fps@720P
  - 16 mm Lens
  - Compatible with HDx, AHD, HDCVI, CVBS and HDTVI DVRs
  - Day/Night(ICR), AWB, AGC, BLC
  - Max. IR LEDs length 70m, IP66

### CP-VCG-SD13L2

1.3 MP Cosmic IR Dome Camera - 20 Mtr.



- Features:
- 1.3 MP HQIS Pro Image Sensor
  - HD & SD Switchable, OSD menu over Coaxial cable
  - Max 25/30fps@1.3MP
  - 3.6mm fixed lens (2.8mm optional)
  - Compatible with HDx, AHD, HDCVI, CVBS and HDTVI DVRs
  - Day/Night(ICR), AWB, AGC, BLC
  - Max. IR LEDs length 20m

### CP-VCG-SD13L3

1.3 MP Cosmic IR Dome Camera - 30 Mtr.



- Features:
- 1.3 MP HQIS Pro Image Sensor
  - HD & SD Switchable, OSD menu over Coaxial cable
  - Max 25/30fps@1.3MP
  - 6 mm Lens
  - Compatible with HDx, AHD, HDCVI, CVBS and HDTVI DVRs
  - Day/Night(ICR), AWB, AGC, BLC
  - Max. IR LEDs length 30m

### CP-VCG-SD13FL4

1.3 MP Cosmic IR VF Dome Camera - 40 Mtr.



- Features:
- 1.3 MP HQIS Pro Image Sensor
  - HD & SD Switchable, OSD menu over Coaxial cable
  - Max 25/30fps@1.3MP
  - 2.8 ~ 12mm Varifocal Lens
  - Compatible with HDx, AHD, HDCVI, CVBS and HDTVI DVRs
  - Day/Night(ICR), AWB, AGC, BLC
  - Max. IR LEDs length 40m

### CP-VCG-ST13L2C

1.3 MP Cosmic IR Bullet Camera - 20 Mtr.



- Features:
- 1.3 MP HQIS Pro Image Sensor
  - HD & SD Switchable, OSD menu over Coaxial cable
  - Max 25/30fps@1.3MP
  - 3.6mm Lens
  - Compatible with HDx, AHD, HDCVI, CVBS and HDTVI DVRs
  - Day/Night(ICR), AWB, AGC, BLC
  - Max. IR LEDs length 20m, IP66

### CP-VCG-ST13L2

1.3 MP Cosmic IR Bullet Camera - 20 Mtr.



- Features:
- 1.3 MP HQIS Pro Image Sensor
  - HD & SD Switchable, OSD menu over Coaxial cable
  - Max 25/30fps@1.3MP
  - 3.6mm fixed lens (2.8mm optional)
  - Compatible with HDx, AHD, HDCVI, CVBS and HDTVI DVRs
  - Day/Night(ICR), AWB, AGC, BLC
  - Max. IR LEDs length 20m, IP66

### CP-VCG-ST13L3

1.3 MP Cosmic IR Bullet Camera - 30 Mtr.



- Features:
- 1.3 MP HQIS Pro Image Sensor
  - HD & SD Switchable, OSD menu over Coaxial cable
  - Max 25/30fps@1.3MP
  - 8 mm Lens
  - Compatible with HDx, AHD, HDCVI, CVBS and HDTVI DVRs
  - Day/Night(ICR), AWB, AGC, BLC
  - Max. IR LEDs length 30m, IP66

### CP-VCG-ST13FL5

1.3 MP Cosmic IR VF Bullet Camera - 50 Mtr.



- Features:
- 1.3 MP HQIS Pro Image Sensor
  - HD & SD Switchable, OSD menu over Coaxial cable
  - Max 25/30fps@1.3MP
  - 2.8 ~ 12mm Varifocal Lens
  - Compatible with HDx, AHD, HDCVI, CVBS and HDTVI DVRs
  - Day/Night(ICR), AWB, AGC, BLC
  - Max. IR LEDs length 50m, IP66



### CP-VCG-ST13R5

1.3 MP Cosmic IR Bullet Camera - 50 Mtr.



- Features:
- 1.3 MP HQIS Pro Image Sensor
  - HD & SD Switchable, OSD menu over Coaxial cable
  - Max 25/30fps@1.3MP
  - 8 mm Lens
  - Compatible with HDx, AHD, HDCVI, CVBS and HDTVI DVRs
  - Day/Night(ICR), AWB, AGC, BLC
  - Max. IR LEDs length 50m, IP66

### CP-VCG-ST13R7

1.3 MP Cosmic IR Bullet Camera - 70 Mtr.



- Features:
- 1.3 MP HQIS Pro Image Sensor
  - HD & SD Switchable, OSD menu over Coaxial cable
  - Max 25/30fps@1.3MP
  - 16 mm Lens
  - Compatible with HDx, AHD, HDCVI, CVBS and HDTVI DVRs
  - Day/Night(ICR), AWB, AGC, BLC
  - Max. IR LEDs length 70m, IP66

### CP-VCG-SD20L2

2 MP Cosmic IR Dome Camera - 20 Mtr.



- Features:
- 1/2.7" 2 MP HQIS Pro Image sensor
  - HD & SD Switchable, OSD menu over Coaxial cable
  - Max 25/30fps@1080P
  - 3.6mm fixed lens (2.8mm optional)
  - Compatible with HDx, AHD, HDCVI, CVBS and HDTVI DVRs
  - Day/Night(ICR), AWB, AGC, BLC
  - Max. IR LEDs length 20m

### CP-VCG-SD20L3

2 MP Cosmic IR Dome Camera - 30 Mtr.



- Features:
- 1/2.7" 2 MP HQIS Pro Image sensor
  - HD & SD Switchable, OSD menu over Coaxial cable
  - Max 25/30fps@1080P
  - 6 mm Lens
  - Compatible with HDx, AHD, HDCVI, CVBS and HDTVI DVRs
  - Day/Night(ICR), AWB, AGC, BLC
  - Max. IR LEDs length 30m

### CP-VCG-SD20FL4

2 MP Cosmic IR VF Dome Camera - 40 Mtr.



- Features:
- 1/2.7" 2 MP HQIS Pro Image sensor
  - HD & SD Switchable, OSD menu over Coaxial cable
  - Max 25/30fps@1080P
  - 2.8 ~ 12mm Varifocal Lens
  - Compatible with HDx, AHD, HDCVI, CVBS and HDTVI DVRs
  - Day/Night(ICR), AWB, AGC, BLC
  - Max. IR LEDs length 40m

### CP-VCG-ST20L2C

2 MP Cosmic IR Bullet Camera - 20 Mtr.



- Features:
- 1/2.7" 2 MP HQIS Pro Image sensor
  - HD & SD Switchable, OSD menu over Coaxial cable
  - Max 25/30fps@1080P
  - 3.6mm Lens
  - Compatible with HDx, AHD, HDCVI, CVBS and HDTVI DVRs
  - Day/Night(ICR), AWB, AGC, BLC
  - Max. IR LEDs length 20m, IP66

### CP-VCG-ST20L2

2 MP Cosmic IR Bullet Camera - 20 Mtr.



- Features:
- 1/2.7" 2 MP HQIS Pro Image sensor
  - HD & SD Switchable, OSD menu over Coaxial cable
  - Max 25/30fps@1080P
  - 3.6mm fixed lens (2.8mm optional)
  - Compatible with HDx, AHD, HDCVI, CVBS and HDTVI DVRs
  - Day/Night(ICR), AWB, AGC, BLC
  - Max. IR LEDs length 20m, IP66

### CP-VCG-ST20L3

2 MP Cosmic IR Bullet Camera - 30 Mtr.



- Features:
- 1/2.7" 2 MP HQIS Pro Image sensor
  - HD & SD Switchable, OSD menu over Coaxial cable
  - Max 25/30fps@1080P
  - 6 mm Lens
  - Compatible with HDx, AHD, HDCVI, CVBS and HDTVI DVRs
  - Day/Night(ICR), AWB, AGC, BLC
  - Max. IR LEDs length 30m, IP66

### CP-VCG-ST20FL5

2 MP Cosmic IR VF Bullet Camera - 50 Mtr.



- Features:
- 1/2.7" 2 MP HQIS Pro Image sensor
  - HD & SD Switchable, OSD menu over Coaxial cable
  - Max 25/30fps@1080P
  - 2.8 ~ 12mm Varifocal Lens
  - Compatible with HDx, AHD, HDCVI, CVBS and HDTVI DVRs
  - Day/Night(ICR), AWB, AGC, BLC
  - Max. IR LEDs length 50m, IP66

### CP-VCG-ST20R5

2 MP Cosmic IR Bullet Camera - 50 Mtr.



- Features:
- 1/2.7" 2 MP HQIS Pro Image sensor
  - HD & SD Switchable, OSD menu over Coaxial cable
  - Max 25/30fps@1080P
  - 8 mm Lens
  - Compatible with HDx, AHD, HDCVI, CVBS and HDTVI DVRs
  - Day/Night(ICR), AWB, AGC, BLC
  - Max. IR LEDs length 50m, IP66

### CP-VCG-ST20R7

2 MP Cosmic IR Bullet Camera - 70 Mtr.



- Features:
- 1/2.7" 2 MP HQIS Pro Image sensor
  - HD & SD Switchable, OSD menu over Coaxial cable
  - Max 25/30fps@1080P
  - 16 mm Lens
  - Compatible with HDx, AHD, HDCVI, CVBS and HDTVI DVRs
  - Day/Night(ICR), AWB, AGC, BLC
  - Max. IR LEDs length 70m, IP66

### CP-VCG-SD24L2

2.4 MP Cosmic IR Dome Camera - 20 Mtr.



- Features:
- 1/2.7" 2.4 MP HQIS Pro Image sensor
  - HD & SD Switchable, OSD menu over Coaxial cable
  - Max 25/30fps@2.4MP
  - 3.6mm Lens
  - Compatible with HDx, AHD, HDCVI, CVBS and HDTVI DVRs
  - Day/Night(ICR), AWB, AGC, BLC
  - Max. IR LEDs length 20m

### CP-VCG-SD24L3

2.4 MP Cosmic IR Dome Camera - 30 Mtr.



- Features:
- 1/2.7" 2.4 MP HQIS Pro Image sensor
  - HD & SD Switchable, OSD menu over Coaxial cable
  - Max 25/30fps@2.4MP
  - 6mm Lens
  - Compatible with HDx, AHD, HDCVI, CVBS and HDTVI DVRs
  - Day/Night(ICR), AWB, AGC, BLC
  - Max. IR LEDs length 30m

### CP-VCG-SD24FL4

2.4 MP Cosmic IR VF Dome Camera - 40 Mtr.



- Features:
- 1/2.7" 2.4 MP HQIS Pro Image sensor
  - HD & SD Switchable, OSD menu over Coaxial cable
  - Max 25/30fps@2.4MP
  - 2.8 ~ 12mm Varifocal Lens
  - Compatible with HDx, AHD, HDCVI, CVBS and HDTVI DVRs
  - Day/Night(ICR), AWB, AGC, BLC
  - Max. IR LEDs length 40m

### CP-VCG-ST24L2C

2.4 MP Cosmic IR Bullet Camera - 20 Mtr.



- Features:
- 1/2.7" 2.4 MP HQIS Pro Image sensor
  - HD & SD Switchable, OSD menu over Coaxial cable
  - Max 25/30fps@2.4MP
  - 3.6mm Lens
  - Compatible with HDx, AHD, HDCVI, CVBS and HDTVI DVRs
  - Day/Night(ICR), AWB, AGC, BLC
  - Max. IR LEDs length 20m, IP66

### CP-VCG-ST24L2

2.4 MP Cosmic IR Bullet Camera - 20 Mtr.



- Features:
- 1/2.7" 2.4 MP HQIS Pro Image sensor
  - HD & SD Switchable, OSD menu over Coaxial cable
  - Max 25/30fps@2.4MP
  - 3.6mm Lens
  - Compatible with HDx, AHD, HDCVI, CVBS and HDTVI DVRs
  - Day/Night(ICR), AWB, AGC, BLC
  - Max. IR LEDs length 20m, IP66

### CP-VCG-ST24L3

2.4 MP Cosmic IR Bullet Camera - 30 Mtr.



- Features:
- 1/2.7" 2.4 MP HQIS Pro Image sensor
  - HD & SD Switchable, OSD menu over Coaxial cable
  - Max 25/30fps@2.4MP
  - 6/3.6 mm Lens
  - Compatible with HDx, AHD, HDCVI, CVBS and HDTVI DVRs
  - Day/Night(ICR), AWB, AGC, BLC
  - Max. IR LEDs length 30m, IP66

### CP-VCG-ST24FL5

2.4 MP Cosmic IR VF Bullet Camera - 50 Mtr.



- Features:
- 1/2.7" 2.4 MP HQIS Pro Image sensor
  - HD & SD Switchable, OSD menu over Coaxial cable
  - Max 25/30fps@2.4MP
  - 2.8 ~ 12mm Varifocal Lens
  - Compatible with HDx, AHD, HDCVI, CVBS and HDTVI DVRs
  - Day/Night(ICR), AWB, AGC, BLC
  - Max. IR LEDs length 50m, IP66

### CP-VCG-ST24R5

2.4 MP Cosmic IR Bullet Camera - 50 Mtr.



- Features:
- 1/2.7" 2.4 MP HQIS Pro Image sensor
  - HD & SD Switchable, OSD menu over Coaxial cable
  - Max 25/30fps@2.4MP
  - 8 mm Lens
  - Compatible with HDx, AHD, HDCVI, CVBS and HDTVI DVRs
  - Day/Night(ICR), AWB, AGC, BLC
  - Max. IR LEDs length 50m, IP66

### CP-VCG-ST24R7

2.4 MP Cosmic IR Bullet Camera - 70 Mtr.



- Features:
- 1/2.7" 2.4 MP HQIS Pro Image sensor
  - HD & SD Switchable, OSD menu over Coaxial cable
  - Max 25/30fps@2.4MP
  - 16 mm Lens
  - Compatible with HDx, AHD, HDCVI, CVBS and HDTVI DVRs
  - Day/Night(ICR), AWB, AGC, BLC
  - Max. IR LEDs length 70m, IP66

### CP-USC-DA10L2

1 MP Cosmic IR Dome Camera - 20 Mtr.



- Features:
- 1 MP HQIS Pro Image Sensor
  - HD & SD Switchable, OSD menu over Coaxial cable
  - Max 25/30fps@720P
  - 3.6mm fixed lens (2.8mm optional)
  - Compatible with HDx, AHD, HDCVI, CVBS and HDTVI DVRs
  - DWDR, Day/Night(ICR), AWB, AGC, BLC
  - Max. IR LEDs length 20m

### CP-USC-DA10L3

1 MP Cosmic IR Dome Camera - 30 Mtr.



- Features:
- 1 MP HQIS Pro Image Sensor
  - HD & SD Switchable, OSD menu over Coaxial cable
  - Max 25/30fps@720P
  - 6mm fixed lens
  - Compatible with HDx, AHD, HDCVI, CVBS and HDTVI DVRs
  - DWDR, Day/Night(ICR), AWB, AGC, BLC
  - Max. IR LEDs length 30m

### CP-USC-TA10L2

1 MP Cosmic IR Bullet Camera - 20 Mtr.



- Features:
- 1 MP HQIS Pro Image Sensor
  - HD & SD Switchable, OSD menu over Coaxial cable
  - Max 25/30fps@720P
  - 3.6mm fixed lens (2.8mm optional)
  - Compatible with HDx, AHD, HDCVI, CVBS and HDTVI DVRs
  - DWDR, Day/Night(ICR), AWB, AGC, BLC
  - Max. IR LEDs length 20m, IP67

### CP-USC-TA10L3

1 MP Cosmic IR Bullet Camera - 30 Mtr.



- Features:
- 1 MP HQIS Pro Image Sensor
  - HD & SD Switchable, OSD menu over Coaxial cable
  - Max 25/30fps@720P
  - 6mm fixed lens
  - Compatible with HDx, AHD, HDCVI, CVBS and HDTVI DVRs
  - DWDR, Day/Night(ICR), AWB, AGC, BLC
  - Max. IR LEDs length 30m, IP67

### CP-USC-DA13L2

1.3 MP Cosmic IR Dome Camera - 20 Mtr.



- Features:
- 1/3" 1.3 MP HQIS Pro Image Sensor
  - HD & SD Switchable, OSD menu over Coaxial cable
  - Max 25/30fps@1.3MP
  - 3.6mm fixed lens (2.8mm optional)
  - Compatible with HDx, AHD, HDCVI, CVBS and HDTVI DVRs
  - DWDR, Day/Night(ICR), AWB, AGC, BLC
  - Max. IR LEDs length 20m

### CP-USC-DA13L3

1.3 MP Cosmic IR Dome Camera - 30 Mtr.



- Features:
- 1/3" 1.3 MP HQIS Pro Image Sensor
  - HD & SD Switchable, OSD menu over Coaxial cable
  - Max 25/30fps@1.3MP
  - 6mm fixed lens
  - Compatible with HDx, AHD, HDCVI, CVBS and HDTVI DVRs
  - DWDR, Day/Night(ICR), AWB, AGC, BLC
  - Max. IR LEDs length 30m

### CP-USC-TA13L2

1.3 MP Cosmic IR Bullet Camera - 20 Mtr.



- Features:
- 1/3" 1.3 MP HQIS Pro Image Sensor
  - HD & SD Switchable, OSD menu over Coaxial cable
  - Max 25/30fps@1.3MP
  - 3.6mm fixed lens (2.8mm optional)
  - Compatible with HDx, AHD, HDCVI, CVBS and HDTVI DVRs
  - DWDR, Day/Night(ICR), AWB, AGC, BLC
  - Max. IR LEDs length 20m, IP67

### CP-USC-TA13L3

1.3 MP Cosmic IR Bullet Camera - 30 Mtr.



- Features:
- 1/3" 1.3 MP HQIS Pro Image Sensor
  - HD & SD Switchable, OSD menu over Coaxial cable
  - Max 25/30fps@1.3MP
  - 3.6mm fixed lens
  - Compatible with HDx, AHD, HDCVI, CVBS and HDTVI DVRs
  - DWDR, Day/Night(ICR), AWB, AGC, BLC
  - Max. IR LEDs length 30m, IP67

### CP-USC-DA20L2

2 MP Cosmic IR Dome Camera - 20 Mtr.



- Features:
- 1/2.7" 2 MP HQIS Pro Image sensor
  - HD & SD Switchable, OSD menu over Coaxial cable
  - Max 25/30fps@1080P
  - 3.6mm fixed lens (6mm optional)
  - Compatible with HDx, AHD, HDCVI, CVBS and HDTVI DVRs
  - DWDR, Day/Night(ICR), AWB, AGC, BLC
  - Max. IR LEDs length 20m

### CP-USC-DA20L3

2 MP Cosmic IR Dome Camera - 30 Mtr.



- Features:
- 1/2.7" 2 MP HQIS Pro Image sensor
  - HD & SD Switchable, OSD menu over Coaxial cable
  - Max 25/30fps@1080P
  - 6mm fixed lens
  - Compatible with HDx, AHD, HDCVI, CVBS and HDTVI DVRs
  - DWDR, Day/Night(ICR), AWB, AGC, BLC
  - Max. IR LEDs length 30m

### CP-USC-TA20L2

2 MP Cosmic IR Bullet Camera - 20 Mtr.



- Features:
- 1/2.7" 2 MP HQIS Pro Image sensor
  - HD & SD Switchable, OSD menu over Coaxial cable
  - Max 25/30fps@1080P
  - 3.6mm fixed lens (6mm optional)
  - Compatible with HDx, AHD, HDCVI, CVBS and HDTVI DVRs
  - DWDR, Day/Night(ICR), AWB, AGC, BLC
  - Max. IR LEDs length 20m, IP67

### CP-USC-TA20L3

2 MP Cosmic IR Bullet Camera - 30 Mtr.



- Features:
- 1/2.7" 2 MP HQIS Pro Image sensor
  - HD & SD Switchable, OSD menu over Coaxial cable
  - Max 25/30fps@1080P
  - 6mm fixed lens
  - Compatible with HDx, AHD, HDCVI, CVBS and HDTVI DVRs
  - DWDR, Day/Night(ICR), AWB, AGC, BLC
  - Max. IR LEDs length 30m, IP67



### CP-UVR-0401E1

4 Ch. 720P HDCVI DVR



► Features:

- 4 Ch. Video, 1 Ch. Audio
- 720P@(1 ~ 25fps)
- 1 SATA port, 2 USB, 1 RJ45
- HDMI / VGA simultaneous video output
- Mobile Software: iCMOB, gCMOB, CMS Software:KVMS, KVMS Pro
- Without Hard disk

### CP-UVR-0401/0801/1601E1-V3

4/8/16 Ch. 720P HDCVI DVR



► Features:

- 4/8/16 Ch. Video, 1 Ch. Audio
- 720P/1080N@(1 ~ 25fps)
- 1 SATA port, 2 USB, 1 RJ45
- HDMI / VGA simultaneous video output
- Mobile Software: iCMOB, gCMOB, CMS Software:KVMS, KVMS Pro
- Without Hard disk

### CP-UVR-0401/0801E1S-S

4/8 Ch. 1080P Lite Cosmic DVR



► Features:

- 4/8 Ch. Video, 1 Ch. Audio
- 4 Ch: 1080P Lite@(1 ~ 25fps)8 Ch: 1080P Lite@(1 ~ 15fps)
- 1 SATA ports, 2 USB, 1 RS485, 1 RJ45
- HDMI / VGA/BNC simultaneous video output
- Mobile Software: iCMOB, gCMOB, CMS Software:KVMS, KVMS Pro
- Without Hard disk

### CP-UVR-0401/0801/1601E1-S

4/8/16 Ch. 1080P Lite Cosmic DVR



► Features:

- 4/8/16 Ch. Video, 1 Ch. Audio
- 4 Ch: 1080P Lite@(1 ~ 25fps)8/16 Ch: 1080P Lite@(1 ~ 15fps)
- 1 SATA port, 2 USB, 1 RJ45
- HDMI / VGA simultaneous video output
- Mobile Software: iCMOB, gCMOB, CMS Software:KVMS, KVMS Pro
- Without Hard disk

### CP-UVR-0404/0808/1616E1-S

4/8/16 Ch. 1080P Lite Cosmic DVR



► Features:

- 4/8/16 Ch. Video, 4/8/16 Ch. Audio
- 4 Ch: 1080P Lite@(1 ~ 25fps)8/16 Ch: 1080P Lite@(1 ~ 15fps)
- 1 SATA port, 2 USB, 1 RJ45, 1 RJ485
- HDMI / VGA/BNC simultaneous video output
- Mobile Software: iCMOB, gCMOB, CMS Software:KVMS, KVMS Pro
- Without Hard disk

### CP-UVR-0401/0801/1601E2-S

4/8/16 Ch. 1080P Lite Cosmic DVR



► Features:

- 4/8/16 Ch. Video, 1 Ch. Audio
- 4 Ch: 1080P Lite@(1 ~ 25fps)8/16 Ch: 1080P Lite@(1 ~ 15fps)
- 2 SATA port, 2 USB, 1 RS485, 1 RJ45
- HDMI / VGA/BNC simultaneous video output
- Mobile Software: iCMOB, gCMOB, CMS Software:KVMS, KVMS Pro
- Without Hard disk

### CP-UVR-0401/0801/1601K1-S

4/8/16 Ch. 1080P Cosmic DVR



► Features:

- 4/8/16 Ch. Video, 1 Ch. Audio
- 1080P@(1 ~ 15fps)
- 1 SATA port, 2 USB, 1 RJ45
- HDMI / VGA/BNC simultaneous video output
- Mobile Software: iCMOB, gCMOB, CMS Software:KVMS, KVMS Pro
- Without Hard disk

### CP-UVR-0404/0808/1616K1-S

4/8/16 Ch. 1080P Cosmic DVR



► Features:

- 4/8/16 Ch. Video, 4/8/16 Ch. Audio
- 1080P@(1 ~ 15fps)
- 1 SATA port, 2 USB, 1 RJ45, 1 RJ485
- HDMI / VGA/BNC simultaneous video output
- Mobile Software: iCMOB, gCMOB, CMS Software:KVMS, KVMS Pro
- Without Hard disk

### CP-UVR-0801K2-S

8 Ch. 1080P Cosmic DVR



► Features:

- 8 Ch. Video, 1 Ch. Audio
- 1080P@(1 ~ 15fps)
- 2 SATA port, 2 USB, 1 RS485, 1 RJ45
- HDMI / VGA/BNC simultaneous video output
- Mobile Software: iCMOB, gCMOB, CMS Software:KVMS, KVMS Pro
- Without Hard disk

### CP-UVR-0801F1-S

8 Ch. 1080P Cosmic DVR



► Features:

- 8 Ch. Video, 1 Ch. Audio
- 1080P@(1 ~ 25fps)
- 1 SATA port, 2 USB, 1 RJ45, 1 RJ485
- HDMI / VGA/BNC simultaneous video output
- Mobile Software: iCMOB, gCMOB, CMS Software:KVMS, KVMS Pro
- Without Hard disk

### CP-UVR-0808F1-S

8 Ch. 1080P Cosmic DVR



► Features:

- 8 Ch. Video, 8 Ch. Audio
- 1080P@(1 ~ 25fps)
- 1 SATA port, 2 USB, 1 RJ45, 1 RJ485
- HDMI / VGA/BNC simultaneous video output
- Mobile Software: iCMOB, gCMOB, CMS Software:KVMS, KVMS Pro
- Without Hard disk

### CP-UVR-1604E2-S

16 Ch. 1080P Lite Cosmic DVR



► Features:

- 16 Ch. Video, 4 Ch. Audio
- 1080P Lite@(1 ~ 15fps)
- 2 SATA port, 2 USB, 1 RJ45, 1 RJ485
- HDMI / VGA/BNC simultaneous video output
- Mobile Software: iCMOB, gCMOB, CMS Software:KVMS, KVMS Pro
- Without Hard disk

### CP-UVR-1616K1-S

16 Ch. 1080P Cosmic DVR



► Features:

- 16 Ch. Video, 16 Ch. Audio
- 1080P@(1 ~ 15fps)
- 1 SATA port, 2 USB, 1 RJ45, 1 RJ485
- HDMI / VGA/BNC simultaneous video output
- Mobile Software: iCMOB, gCMOB, CMS Software:KVMS, KVMS Pro
- Without Hard disk

### CP-UVR-1604K2-S

16 Ch. 1080P Cosmic DVR



► Features:

- 16 Ch. Video, 4 Ch. Audio
- 1080P@(1 ~ 15fps)
- 2 SATA port, 2 USB, 1 RJ45, 1 RJ485
- HDMI / VGA/BNC simultaneous video output
- Mobile Software: iCMOB, gCMOB, CMS Software:KVMS, KVMS Pro
- Without Hard disk

### CP-UVR-1601F1-S

16 Ch. 1080P Cosmic DVR



► Features:

- 16 Ch. Video, 1 Ch. Audio
- 1080P@(1 ~ 25fps)
- 1 SATA port, 2 USB, 1 RJ45, 1 RJ485
- HDMI / VGA/BNC simultaneous video output
- Mobile Software: iCMOB, gCMOB, CMS Software:KVMS, KVMS Pro
- Without Hard disk

### CP-UVR-1616F1-S

16 Ch. 1080P Cosmic DVR



► Features:

- 16 Ch. Video, 16 Ch. Audio
- 1080P@(1 ~ 25fps)
- 1 SATA port, 2 USB, 1 RJ45, 1 RJ485
- HDMI / VGA/BNC simultaneous video output
- Mobile Software: iCMOB, gCMOB, CMS Software:KVMS, KVMS Pro
- Without Hard disk

### CP-UVR-1604F2-S

16 Ch. 1080P Cosmic DVR



► Features:

- 16 Ch. Video, 4 Ch. Audio
- 1080P@(1 ~ 25fps)
- 2 SATA port, 2 USB, 1 RS485, 1 RJ45
- HDMI / VGA/BNC simultaneous video output
- Mobile Software: iCMOB, gCMOB, CMS
- Software:KVMS, KVMS Pro
- Without Hard disk

### CP-UVR-3201E2-S

32 Ch. 1080P Lite Cosmic DVR



► Features:

- 32 Ch. Video, 1 Ch. Audio
- 1080P Lite@(1 ~ 15fps)
- 2 SATA port, 1 USB, 1 RS485, 1 RJ45
- HDMI / VGA/BNC simultaneous video output
- Mobile Software: iCMOB, gCMOB, CMS
- Software:KVMS, KVMS Pro
- Without Hard disk

### CP-UVR-3201K2-S

32 Ch. 1080P Cosmic DVR



► Features:

- 32 Ch. Video, 1 Ch. Audio
- 1080P@(1 ~ 15fps)
- 2 SATA port, 1 USB, 1 RJ45
- HDMI / VGA/BNC simultaneous video output
- Mobile Software: iCMOB, gCMOB, CMS
- Software:KVMS, KVMS Pro
- Without Hard disk

### CP-UVR-0804K4D-S

8 Ch. 1080P Cosmic DVR



► Features:

- 8 Ch. Video, 4 Ch. Audio
- 1080P@(1 ~ 15fps)
- 4 SATA Port, 1 eSATA, 3 USB, 1 RJ45, 1 RS485
- HDMI / VGA/BNC simultaneous video output
- Mobile Software: iCMOB, gCMOB, CMS
- Software:KVMS, KVMS Pro
- Without Hard disk

### CP-UVR-0808K8D-S

8 Ch. 1080P Cosmic DVR



► Features:

- 8 Ch. Video, 8 Ch. Audio
- 1080P@(1 ~ 15fps)
- 8 SATA Port, 1 eSATA, 4 USB, 1 RJ45, 1 RS485
- HDMI / VGA/BNC simultaneous video output
- Mobile Software: iCMOB, gCMOB, CMS
- Software:KVMS, KVMS Pro
- Without Hard disk

### CP-UVR-1604K4D-S

16 Ch. 1080P Cosmic DVR



► Features:

- 16 Ch. Video, 4 Ch. Audio
- 1080P@(1 ~ 15fps)
- 4 SATA Port, 1 eSATA, 3 USB, 1 RJ45, 1 RS485
- HDMI / VGA/BNC simultaneous video output
- Mobile Software: iCMOB, gCMOB, CMS
- Software:KVMS, KVMS Pro
- Without Hard disk

### CP-UVR-1616K8D-S

16 Ch. 1080P Cosmic DVR



► Features:

- 16 Ch. Video, 16 Ch. Audio
- 1080P@(1 ~ 15fps)
- 8 SATA Port, 1 eSATA, 4 USB, 1 RJ45, 1 RS485
- HDMI / VGA/BNC simultaneous video output
- Mobile Software: iCMOB, gCMOB, CMS
- Software:KVMS, KVMS Pro
- Without Hard disk

### CP-UVR-3204K4D-S

32 Ch. 1080P Cosmic DVR



► Features:

- 32 Ch. Video, 4 Ch. Audio
- 1080P@(1 ~ 15fps)
- 4 SATA Port, 1 eSATA, 3 USB, 1 RJ45, 1 RS485
- HDMI / VGA/BNC simultaneous video output
- Mobile Software: iCMOB, gCMOB, CMS
- Software:KVMS, KVMS Pro
- Without Hard disk

### CP-UVR-3216K8D-S

32 Ch. 1080P Cosmic DVR



► Features:

- 32 Ch. Video, 16 Ch. Audio
- 1080P@(1 ~ 15fps)
- 8 SATA Port, 1 eSATA, 4 USB, 1 RJ45, 1 RS485
- HDMI / VGA/BNC simultaneous video output
- Mobile Software: iCMOB, gCMOB, CMS
- Software:KVMS, KVMS Pro
- Without Hard disk



# the portfolio



## HDCVI PTZ Cameras

### CP-UVP-E2520L15-D

2 MP 25x HDCVI IR PTZ Camera



#### ► Features:

- 1/2.8" Exmor HQIS Pro Image sensor
- 25/30fps@1080P
- 4.8mm ~ 120mm, 25x Zoom
- Max 300°/s pan speed, Up to 300 presets
- IR Range of 150 Mtr., IP66

### CP-UVP-F2520L15-D

2 MP 25x HDCVI IR PTZ Camera



#### ► Features:

- 1/2.8" Exmor HQIS Pro Image sensor
- 25/30fps@1080P
- 4.8mm ~ 120mm, 25x Zoom
- Max 300°/s pan speed, Up to 300 presets
- IR Range of 100 Mtr., IP66



# the portfoljo





### CP-UNC-DA10L3S

1MP HD IR IP Dome Camera



► Features:

- 1/4" 1 MP CMOS Image Sensor
- H.264 & MJPEG dual-stream encoding
- Max 25/30fps@720P(1280×720)
- 3.6mm fixed Lens(2.8mm Optional)
- DWDR, Day/Night, 3D-DNR, Auto iris, AWB, AGC, BLC
- IR Range of 30 Mtr., IP67
- Mobile Software: iCMOB, gCMOB, CMS Software: KVMS Pro, vOptimus Pro

### CP-UNC-VA10L3S

1MP HD IR IP Vandal Dome Camera



► Features:

- 1/4" 1 MP CMOS Image Sensor
- H.264 & MJPEG dual-stream encoding
- Max 25/30fps@720P(1280×720)
- 3.6mm Fixed Lens(2.8mm Optional)
- DWDR, Day/Night, 3D-DNR, Auto iris, AWB, AGC, BLC
- IR Range of 30 Mtr., IP67 & IK10
- Mobile Software: iCMOB, gCMOB, CMS Software: KVMS Pro, vOptimus Pro

### CP-UNC-TA10L3S

1MP HD IR IP Bullet Camera



► Features:

- 1/4" 1 MP CMOS Image Sensor
- H.264 & MJPEG dual-stream encoding
- Max 25/30fps@720P(1280×720)
- 3.6mm fixed Lens(2.8mm Optional)
- DWDR, Day/Night, 3D-DNR, Auto iris, AWB, AGC, BLC
- IR Range of 30 Mtr., IP67
- Mobile Software: iCMOB, gCMOB, CMS Software: KVMS Pro, vOptimus Pro

### CP-UNC-TA10L4S

1MP HD IR IP Bullet Camera



► Features:

- 1/4" 1 MP CMOS Image Sensor
- H.264 & MJPEG dual-stream encoding
- Max 25/30fps@720P(1280×720)
- 3.6mm Fixed Lens(8mm Optional)
- DWDR, Day/Night, 3D-DNR, Auto iris, AWB, AGC, BLC
- IR Range of 40 Mtr., IP67
- Mobile Software: iCMOB, gCMOB, CMS Software: KVMS Pro, vOptimus Pro

### CP-UNC-TA10L6S

1MP HD IR IP Bullet Camera



► Features:

- 1/4" 1 MP CMOS Image Sensor
- H.264 & MJPEG dual-stream encoding
- Max 25/30fps@720P(1280×720)
- 3.6mm Fixed Lens(6mm Optional)
- DWDR, Day/Night, 3D-DNR, Auto iris, AWB, AGC, BLC
- IR Range of 60 Mtr., IP67
- Mobile Software: iCMOB, gCMOB, CMS Software: KVMS Pro, vOptimus Pro

### CP-UNC-VA13L3-M-V3

1.3MP HD IR IP Vandal Dome Camera



► Features:

- 1/3" 1.3MP PS CMOS Image Sensor
- H.264 & MJPEG dual-stream encoding
- Max 25/30fps@1.3M(1280×960)
- 3.6mm Fixed Lens (2.8mm, 6mm optional)
- DWDR, Day/Night, 3D-DNR, Auto iris, AWB, AGC, BLC
- Max. IR LEDs length 30m, Micro SD, IP67 & IK10, PoE
- Mobile Software: iCMOB, gCMOB, CMS Software: KVMS Pro, vOptimus Pro

### CP-UNC-VA13L3-VM-V3

1.3MP HD IR IP Vandal Dome Camera



► Features:

- 1/3" 1.3MP PS CMOS Image Sensor
- H.264 & MJPEG dual-stream encoding
- Max 25/30fps@1.3M(1280×960)
- 3.6mm Fixed Lens (2.8mm, 6mm optional)
- DWDR, Day/Night, 3D-DNR, Auto iris, AWB, AGC, BLC
- Max. IR LEDs length 30m, Micro SD, IP67 & IK10, PoE
- Mobile Software: iCMOB, gCMOB, CMS Software: KVMS Pro, vOptimus Pro

### CP-UNC-TA13L5-VM

1.3MP HD IR IP Bullet Camera



► Features:

- 1/3" 1.3MP PS CMOS Image Sensor
- H.264 & MJPEG dual-stream encoding
- Max 25/30fps@1.3M(1280×960)
- 3.6mm Fixed Lens (6mm optional)
- DWDR, Day/Night, 3D-DNR, Auto iris, AWB, AGC, BLC
- Max. IR LEDs length 50m, Micro SD, IP67, PoE
- Mobile Software: iCMOB, gCMOB, CMS Software: KVMS Pro, vOptimus Pro

### CP-UNC-VB13FL3-M-V2

1.3MP HD IR IP VF Vandal Dome Camera



► Features:

- 1/3" 1.3MP PS CMOS Image Sensor
- H.264 & MJPEG dual-stream encoding
- Max 25/30fps@1.3M(1280×960)
- 2.7 ~ 12mm varifocal lens
- DWDR, Day/Night, 3D-DNR, Auto iris, AWB, AGC, BLC
- Max. IR LEDs length 30m, Micro SD, IP67 & IK10, PoE
- Mobile Software: iCMOB, gCMOB, CMS Software: KVMS Pro, vOptimus Pro

### CP-UNC-TB13FL6-M-V2

1.3MP HD IR IP VF Bullet Camera



► Features:

- 1/3" 1.3MP PS CMOS Image Sensor
- H.264 & MJPEG dual-stream encoding
- Max 25/30fps@1.3M(1280×960)
- 2.7 ~ 12mm varifocal lens
- DWDR, Day/Night, 3D-DNR, Auto iris, AWB, AGC, BLC
- Max. IR LEDs length 60m, Micro SD, IP67, PoE
- Mobile Software: iCMOB, gCMOB, CMS Software: KVMS Pro, vOptimus Pro

### CP-UNC-VB13ZL3-VMD

1.3MP HD IR IP VF Vandal Dome Camera



► Features:

- 1/3" 1.3MP PS CMOS Image Sensor
- H.264 & MJPEG dual-stream encoding
- Max 25/30fps@1.3M(1280×960)
- 2.7 ~ 12mm motorized lens
- WDR, Day/Night(ICR), 3DNR, AWB, AGC, BLC
- Max. IR LEDs length 30m, Micro SD, IP67 & IK10, PoE
- Mobile Software: iCMOB, gCMOB, CMS Software: KVMS Pro, vOptimus Pro

### CP-UNC-TB13ZL6-VMD

1.3MP HD IR IP VF Bullet Camera



► Features:

- 1/3" 1.3MP PS CMOS Image Sensor
- H.264 & MJPEG dual-stream encoding
- Max 25/30fps@1.3M(1280×960)
- 2.7 ~ 12mm motorized lens
- WDR, Day/Night(ICR), 3DNR, AWB, AGC, BLC
- Max. IR LEDs length 60m, Micro SD, IP67, PoE
- Mobile Software: iCMOB, gCMOB, CMS Software: KVMS Pro, vOptimus Pro

### CP-UNC-DA20L3S-V2

2MP Full HD IR IP Dome Camera



► Features:

- 1/2.7" 2Megapixel PS CMOS Image Sensor
- H.264 & MJPEG dual-stream encoding
- Max 25/30fps@1080P(1920×1080)
- 2.8mm Fixed Lens (3.6mm optional)
- DWDR, Day/Night(ICR), 3D-DNR, AWB, AGC, BLC
- Max. IR LEDs length 30m, IP67, PoE
- Mobile Software: iCMOB, gCMOB, CMS Software: KVMS Pro, vOptimus Pro

### CP-UNC-VA20L3S-V2

2MP Full HD IR IP Vandal Dome Camera



► Features:

- 1/2.7" 2Megapixel PS CMOS Image Sensor
- H.264 & H.264+ dual-stream encoding
- Max 25/30fps@1080P(1920×1080)
- 2.8mm Fixed Lens (3.6mm optional)
- DWDR, Day/Night(ICR), 3D-DNR, AWB, AGC, BLC
- Max. IR LEDs length 30m, IP67 & IK10, PoE
- Mobile Software: iCMOB, gCMOB, CMS Software: KVMS Pro, vOptimus Pro

### CP-UNC-TA20L3S-V2

2MP Full HD IR IP Bullet Camera



► Features:

- 1/2.7" 2Megapixel PS CMOS Image Sensor
- H.264 & H.264+ dual-stream encoding
- Max 25/30fps@1080P(1920×1080)
- 2.8mm Fixed Lens (3.6mm optional)
- DWDR, Day/Night(ICR), 3D-DNR, AWB, AGC, BLC
- Max. IR LEDs length 30m, IP67, PoE
- Mobile Software: iCMOB, gCMOB, CMS Software: KVMS Pro, vOptimus Pro

### CP-UNC-TA20L5S-V2

2 MP Full HD IR IP Bullet Camera



► Features:

- 1/2.7" 2 MP CMOS Image Sensor
- H.264 & H.264+ dual-stream encoding
- Max 25/30fps@1080P(1920×1080)
- 3.6mm Fixed Lens (2.8mm, 6mm, 8mm optional)
- DWDR, Day/Night(ICR), 2DNR, AWB, AGC, BLC
- Max. IR LEDs Length 50m, IP67, PoE
- Mobile Software: iCMOB, gCMOB, CMS Software: KVMS Pro, vOptimus Pro

### CP-UNC-TA20L8S-V2

2 MP Full HD IR IP Bullet Camera



► Features:

- 1/2.9" 2 MP CMOS Image Sensor
- H.264 & MJPEG dual-stream encoding
- Max 25/30fps@1080P(1920×1080)
- 3.6mm Fixed Lens (6mm,8mm optional)
- DWDR, Day/Night(ICR), 2DNR, AWB, AGC, BLC
- Max. IR LEDs Length 80m, IP67
- Mobile Software: iCMOB, gCMOB, CMS
- Software: KVMS Pro, vOptimus Pro

### CP-UNC-TA20L5-VM

2 MP Full HD IR IP Bullet Camera



► Features:

- 1/2.9" 2 MP CMOS Image Sensor
- H.264 & MJPEG dual-stream encoding
- Max 25/30fps@1080P(1920×1080)
- 3.6mm Fixed Lens (2.8mm,6mm,8mm optional)
- DWDR, Day/Night(ICR), 2DNR, AWB, AGC, BLC
- Max. IR LEDs Length 50m, IP67
- Mobile Software: iCMOB, gCMOB, CMS
- Software: KVMS Pro, vOptimus Pro

### CP-UNC-VB20FL3S-M-V2

2 MP Full HD IR IP Vandal Dome Camera



► Features:

- 1/2.8" 2 MP CMOS Image Sensor
- H.264 & MJPEG dual-stream encoding
- Max 25/30fps@1080P(1920×1080)
- 2.7 ~ 12mm varifocal lens
- DWDR, Day/Night(ICR), 3DNR, AWB, AGC, BLC
- Max IR LEDs Length 30m, IP67, IK10, PoE, Micro SD card
- Mobile Software: iCMOB, gCMOB, CMS
- Software: KVMS Pro, vOptimus Pro

### CP-UNC-TB20FL6S-M-V2

2 MP Full HD IR IP Bullet Camera



► Features:

- 1/2.8" 2 MP CMOS Image Sensor
- H.264 & MJPEG dual-stream encoding
- Max 25/30fps@1080P(1920×1080)
- 2.7 ~ 12mm varifocal lens
- DWDR, Day/Night(ICR), 3DNR, AWB, AGC, BLC
- Max IR LEDs Length 60m, IP67, PoE
- Mobile Software: iCMOB, gCMOB, CMS
- Software: KVMS Pro, vOptimus Pro

### CP-UNC-VB20ZL3S-VMD-V2

2 MP Full HD IR IP WDR Vandal Dome Camera



► Features:

- 1/3" 2 MP CMOS Image Sensor
- H.264 & MJPEG dual-stream encoding
- Max 25/30fps@1080P(1920×1080)
- 2.7 ~ 12mm motorized lens
- WDR, Day/Night(ICR), 3DNR, AWB, AGC, BLC
- Max IR LEDs Length 30m, IP67, IK10, PoE, Micro SD card
- Mobile Software: iCMOB, gCMOB, CMS
- Software: KVMS Pro, vOptimus Pro

### CP-UNC-TB20ZL6S-VMD-V2

2 MP Full HD IR IP WDR Bullet Camera



► Features:

- 1/3" 2 MP CMOS Image Sensor
- H.264 & MJPEG dual-stream encoding
- Max 25/30fps@1080P(1920×1080)
- 2.7 ~ 12mm motorized lens
- WDR, Day/Night(ICR), 3DNR, AWB, AGC, BLC
- Max IR LEDs Length 60m, IP67, PoE, Micro SD card
- Mobile Software: iCMOB, gCMOB, CMS
- Software: KVMS Pro, vOptimus Pro

### CP-UNC-DA30L3S-V2

3 MP Full HD IR IP Dome Camera



► Features:

- 1/3" 3 MP CMOS Image Sensor
- H.264 & MJPEG dual-stream encoding
- Max 20fps@3M(2048×1536)& 25/30fps@2M(1920×1080)
- 2.8 mm fixed lens (3.6mm optional)
- DWDR, Day/Night(ICR), 3DNR, AWB, AGC, BLC
- Max IR LEDs Length 30m, IP67, PoE,
- Mobile Software: iCMOB, gCMOB, CMS
- Software: KVMS Pro, vOptimus Pro

### CP-UNC-VA30L3S-V2

3 MP Full HD IR IP Vandal Dome Camera



► Features:

- 1/3" 3 MP CMOS Image Sensor
- H.264 & MJPEG dual-stream encoding
- Max 20fps@3M(2048×1536) & 25/30fps@2M(1920×1080)
- 2.8 mm fixed lens (3.6mm optional)
- DWDR, Day/Night(ICR), 3DNR, AWB, AGC, BLC
- Max IR LEDs Length 30m, IP67, IK10, PoE
- Mobile Software: iCMOB, gCMOB, CMS
- Software: KVMS Pro, vOptimus Pro

### CP-UNC-VA30L3S-M-V3

3 MP Full HD IR IP Vandal Dome Camera



► Features:

- 1/3" 3 MP CMOS Image Sensor
- H.264 & MJPEG dual-stream encoding
- Max 20fps@3M(2048×1536)& 25/30fps@2M(1920×1080)
- 2.8 mm fixed lens (3.6mm optional)
- DWDR, Day/Night(ICR), 3DNR, AWB, AGC, BLC
- Max IR LEDs Length 30m, IP67, IK10, PoE, Micro SD card
- Mobile Software: iCMOB, gCMOB, CMS
- Software: KVMS Pro, vOptimus Pro

### CP-UNC-TA30L3S-V2

3 MP Full HD IR IP Bullet Camera



► Features:

- 1/3" 3 MP CMOS Image Sensor
- H.264 & MJPEG dual-stream encoding
- Max 20fps@3M(2048×1536) & 25/30fps@2M(1920×1080)
- 2.8 mm fixed lens (3.6mm, 6mm optional)
- DWDR, Day/Night(ICR), 3DNR, AWB, AGC, BLC
- Max IR LEDs Length 30m, IP67, PoE
- Mobile Software: iCMOB, gCMOB, CMS
- Software: KVMS Pro, vOptimus Pro

### CP-UNC-TA30L5S-V2

3 MP Full HD IR IP Bullet Camera



► Features:

- 1/3" 3 MP CMOS Image Sensor
- H.264 & MJPEG dual-stream encoding
- Max 20fps@3M(2048×1536) & 25/30fps@2M(1920×1080)
- 3.6mm Fixed Lens (2.8mm,6mm,8mm optional)
- DWDR, Day/Night(ICR), 2DNR, AWB, AGC, BLC
- Max. IR LEDs Length 50m, IP67, PoE
- Mobile Software: iCMOB, gCMOB, CMS
- Software: KVMS Pro, vOptimus Pro

### CP-UNC-TA30L8S-V2

3 MP Full HD IR IP Bullet Camera



► Features:

- 1/3" 3 MP CMOS Image Sensor
- H.264 & MJPEG dual-stream encoding
- Max 20fps@3M(2048×1536) & 25/30fps@2M(1920×1080)
- 3.6mm Fixed Lens (6mm,8mm optional)
- DWDR, Day/Night(ICR), 2DNR, AWB, AGC, BLC
- Max. IR LEDs Length 80m, IP67, PoE
- Mobile Software: iCMOB, gCMOB, CMS
- Software: KVMS Pro, vOptimus Pro

### CP-UNC-VB30FL3S-M-V2

3 MP Full HD IR IP Vandal Dome Camera



► Features:

- 1/3" 3 MP CMOS Image Sensor
- H.264 & MJPEG dual-stream encoding
- Max 20fps@3M(2048×1536)& 25/30fps@2M(1920×1080)
- 2.7 ~ 12mm varifocal lens
- DWDR, Day/Night(ICR), 3DNR, AWB, AGC, BLC
- Max IR LEDs Length 30m, IP67, IK10, PoE, Micro SD card
- Mobile Software: iCMOB, gCMOB, CMS
- Software: KVMS Pro, vOptimus Pro

### CP-UNC-TB30FL6S-M-V2

3 MP Full HD IR IP Bullet Camera



► Features:

- 1/3" 3 MP CMOS Image Sensor
- H.264 & MJPEG dual-stream encoding
- Max 20fps@3M(2048×1536)& 25/30fps@2M(1920×1080)
- 2.7 ~ 12mm varifocal lens
- DWDR, Day/Night(ICR), 3DNR, AWB, AGC, BLC
- Max IR LEDs Length 60m, IP67, PoE, Micro SD card
- Mobile Software: iCMOB, gCMOB, CMS
- Software: KVMS Pro, vOptimus Pro

### CP-UNC-VB40ZL3-VMD

4 MP Full HD IR IP WDR Vandal Dome Camera



► Features:

- 1/3" 4 MP CMOS Image Sensor
- H.264 & MJPEG dual-stream encoding
- Max 20fps@4M(2688x1520) & 25/30fps@3M(2304×1296)
- 2.7 ~ 12mm motorized lens
- WDR, Day/Night(ICR), 3DNR, AWB, AGC, BLC
- Max IR LEDs Length 30m, IP67, IK10, PoE, Micro SD card
- Mobile Software: iCMOB, gCMOB, CMS
- Software: KVMS Pro, vOptimus Pro

### CP-UNC-TB40ZL6-MD

4 MP Full HD IR IP WDR Bullet Camera



► Features:

- 1/3" 4 MP CMOS Image Sensor
- H.264 & MJPEG dual-stream encoding
- Max 20fps@4M(2688x1520) & 25/30fps@3M(2304×1296)
- 2.7 ~ 12mm motorized lens
- WDR, Day/Night(ICR), 3DNR, AWB, AGC, BLC
- Max IR LEDs Length 60m, IP67, PoE, Micro SD card
- Mobile Software: iCMOB, gCMOB, CMS
- Software: KVMS Pro, vOptimus Pro



**CP-UNC-DD21L3-D**

2 MP Full HD IR IP Dome Camera



► Features:

- 1/2.8" 2 MP CMOS Image Sensor
- H.265 & MJPEG dual-stream encoding
- Max 50/60fps@1080P(1920×1080)
- 3.6mm fixed lens (6mm optional)
- WDR, Day/Night(ICR), 3DNR, AWB, AGC, BLC
- Max IR LEDs Length 30m, IP67, PoE,
- Mobile Software: iCMOB, gCMOB, CMS Software: KVMS Pro, vOptimus Pro

**CP-UNC-VD21L3-VMD**

2 MP Full HD IR IP Vandal Dome Camera



► Features:

- 1/2.8" 2 MP CMOS Image Sensor
- H.265 & H.264 Triple-stream encoding
- Max 50/60fps@1080P(1920×1080)
- 3.6mm fixed lens (2.8mm, 6mm optional)
- WDR, Day/Night(ICR), 3DNR, AWB, AGC, BLC
- Max IR LEDs Length 30m, IP67, PoE, Micro SD card
- Mobile Software: iCMOB, gCMOB, CMS Software: KVMS Pro, vOptimus Pro

**CP-UNC-TD21L4-MD**

2 MP Full HD IR IP Bullet Camera



► Features:

- 1/2.8" 2 MP CMOS Image Sensor
- H.265 & H.264 Triple-stream encoding
- Max 50/60fps@1080P(1920×1080)
- 3.6mm fixed lens (6mm optional)
- WDR, Day/Night(ICR), 3DNR, AWB, AGC, BLC
- Max IR LEDs Length 40m, IP67, PoE, Micro SD card
- Mobile Software: iCMOB, gCMOB, CMS Software: KVMS Pro, vOptimus Pro

**CP-UNC-TD21L8-VMD**

2 MP Full HD IR IP Bullet Camera



► Features:

- 1/2.8" 2 MP CMOS Image Sensor
- H.265 & H.264 Triple-stream encoding
- Max 50/60fps@1080P(1920×1080)
- 3.6mm fixed lens (6mm optional)
- WDR, Day/Night(ICR), 3DNR, AWB, AGC, BLC
- Max IR LEDs Length 80m, IP67, PoE, Micro SD card
- Mobile Software: iCMOB, gCMOB, CMS Software: KVMS Pro, vOptimus Pro

**CP-UNC-VE21ZL5-VMD**

4 MP Full HD WDR IP IR Vandal Dome Camera



► Features:

- 1/3" 4 MP CMOS Image Sensor
- H.265 & MJPEG dual-stream encoding
- Max 20fps@4MP(2560×1440)
- 2.7 ~ 12mm Motorized Lens
- WDR, Day/Night, 3D-DNR, Auto iris, AWB, AGC, BLC
- IR Range of 50 Mtr., Micro SD, IP67 & IK10
- Mobile Software: iCMOB, gCMOB, CMS Software: KVMS Pro, vOptimus Pro

**CP-UNC-TE21ZL5-VMD**

2 MP Full HD IR IP Bullet Camera



► Features:

- 1/2.8" 2 MP CMOS Image Sensor
- H.265 & H.264 Triple-stream encoding
- Max 50/60fps@1080P(1920×1080)
- 2.7mm ~ 12mm Motorized lens
- WDR, Day/Night(ICR), 3DNR, AWB, AGC, BLC
- IR Range of 50 Mtr., IP67, PoE, Micro SD card
- Mobile Software: iCMOB, gCMOB, CMS Software: KVMS Pro, vOptimus Pro

**CP-UNC-BE21-VMD**

2 MP Full HD WDR IP Box Camera



► Features:

- 1/2.8" 2 MP CMOS Image Sensor
- H.265 & H.264 Triple-stream encoding
- Max 50/60fps@1080P(1920×1080)
- C/CS Mount Lens
- WDR, Day/Night(ICR), 3DNR, AWB, AGC, BLC
- Micro SD, PoE, 2/1 Alarm in/out, 1/1 audio in/out
- Mobile Software: iCMOB, gCMOB, CMS Software: KVMS Pro, vOptimus Pro

**CP-UNC-DD41L3-D**

4 MP Full HD WDR IP IR Dome Camera



► Features:

- 1/3" 4 MP CMOS Image Sensor
- H.265 & H.264 Triple-stream encoding
- Max 25/30fps@4M(2688×1520)
- 3.6mm fixed lens (2.8mm, 6mm optional)
- WDR, Day/Night(ICR), 3DNR, AWB, AGC, BLC
- Max. IR LEDs length 30m, IP67, PoE
- Mobile Software: iCMOB, gCMOB, CMS Software: KVMS Pro, vOptimus Pro

**CP-UNC-VD41L3-VMD**

4 MP Full HD WDR IR IP Vandal Dome Camera



► Features:

- 1/3" 4Megapixel PS CMOS Image Sensor
- H.265 & MJPEG dual-stream encoding
- Max 20fps@4MP(2560×1440) & 25/30fps@3MP(2304×1296)
- 3.6mm Fixed Lens (6mm optional)
- WDR, Day/Night(ICR), Auto Iris, 3DNR, AWB, AGC, BLC
- Max. IR LEDs length 30m, Micro SD, IP67 & IK10, PoE
- Mobile Software: iCMOB, gCMOB, CMS Software: KVMS Pro, vOptimus Pro

**CP-UNC-TD41L4-MD**

4 MP Full HD WDR IR IP Bullet Camera



► Features:

- 1/3" 4Megapixel PS CMOS Image Sensor
- H.265 & MJPEG dual-stream encoding
- Max 25/30fps@4M(2688×1520)
- 3.6mm Fixed Lens (6mm optional)
- WDR, Day/Night(ICR), Auto Iris, 3DNR, AWB, AGC, BLC
- Max. IR LEDs length 40m, Micro SD, IP67 & PoE
- Mobile Software: iCMOB, gCMOB, CMS Software: KVMS Pro, vOptimus Pro

**CP-UNC-TD41L8-VMD**

4 MP Full HD WDR IR IP Bullet Camera



► Features:

- 1/3" 4Megapixel PS CMOS Image Sensor
- H.265 & MJPEG dual-stream encoding
- Max 20fps@4MP(2560×1440) & 25/30fps@3MP(2304×1296)
- 6mm Fixed Lens
- WDR, Day/Night(ICR), Auto Iris, 3DNR, AWB, AGC, BLC
- Max. IR LEDs length 80m, Micro SD, IP67, PoE
- Mobile Software: iCMOB, gCMOB, CMS Software: KVMS Pro, vOptimus Pro

**CP-UNC-VE41ZL5-VMD**

4 MP Full HD WDR IR IP Vandal Dome Camera



► Features:

- 1/3" 4 MP CMOS Image Sensor
- H.265 & MJPEG dual-stream encoding
- Max 25/30fps@4M(2688×1520)
- 2.7mm ~ 12mm motorized lens
- WDR, Day/Night(ICR), 3DNR, AWB, AGC, BLC
- Max. IR LEDs length 50m, Micro SD, IP67, IK10, PoE
- Mobile Software: iCMOB, gCMOB, CMS Software: KVMS Pro, vOptimus Pro

**CP-UNC-BE41-VMD**

4 MP Full HD WDR IP Box Camera



► Features:

- 1/3" 4 MP CMOS Image Sensor
- H.265 & MJPEG dual-stream encoding
- Max 25/30fps@4M(2688×1520)
- C/CS Mount Lens
- WDR, Day/Night(ICR), 3DNR, AWB, AGC, BLC
- Micro SD, PoE, 2/1 Alarm in/out, 1/1 audio in/out
- Mobile Software: iCMOB, gCMOB, CMS Software: KVMS Pro, vOptimus Pro

**CP-UNC-VD4K081L3-VM**

8MP 4K IP IR Vandal Dome Camera



► Features:

- 1/2.5" 4K progressive scan CMOS Image Sensor
- H.265 & MJPEG dual-stream encoding
- Max 15fps@4K(3840×2160)& 25/30fps@3M(2304×1296)
- 4mm fixed lens
- DWDR, Day/Night(ICR), 3DNR, AWB, AGC, BLC
- Max. IR LEDs length 30m, IP67, IK10, PoE
- Mobile Software: iCMOB, gCMOB, CMS Software: KVMS Pro, vOptimus Pro

**CP-UNC-TD4K081L4-M**

8MP 4K IP IR Bullet Camera



► Features:

- 1/2.5" 4K progressive scan CMOS Image Sensor
- H.265 & MJPEG dual-stream encoding
- Max 15fps@4K(3840×2160)& 25/30fps@3M(2304×1296)
- 4mm fixed lens
- DWDR, Day/Night(ICR), 3DNR, AWB, AGC, BLC
- Max. IR LEDs length 40m, IP67, Micro SD, PoE
- Mobile Software: iCMOB, gCMOB, CMS Software: KVMS Pro, vOptimus Pro

**CP-UNC-VE4K081ZL5-VM**

8 MP 4K IP IR Vandal Dome Camera



► Features:

- 1/2.5" 4K progressive scan CMOS Image Sensor
- H.265 & MJPEG dual-stream encoding
- Max 15fps@4K(3840×2160)& 25/30fps@3M(2304×1296)
- 2.7mm ~ 12mm motorized lens
- Day/Night(ICR), 3DNR, AWB, AGC, BLC
- Max. IR LEDs length 50m, IP67, IK10 & PoE
- Mobile Software: iCMOB, gCMOB, CMS Software: KVMS Pro, vOptimus Pro



### CP-UNC-TE4K081ZL5-VM

8 MP 4K IR IP Vandal Dome Camera



- Features:
- 1/2.5" 4K progressive scan CMOS Image Sensor
  - H.264 & MJPEG dual-stream encoding
  - Max 15fps@4K(3840×2160)& 25/30fps@3M(2304×1296)
  - 2.7mm ~ 12mm motorized lens
  - Day/Night(ICR), 3DNR, AWB, AGC, BLC
  - Max. IR LEDs length 50m, IP67, IK10 & PoE
  - Mobile Software: iCMOB, gCMOB, CMS Software: KVMS Pro, vOptimus Pro

### CP-UNC-TH31ZL5-VMD

3MP Full HD WDR IP Bullet Camera



- Features:
- 1/2.8" 3 MP CMOS Image Sensor
  - H.265 & MJPEG dual-stream encoding
  - Max 25/30fps@3MP(2048×1536)
  - 2.7 ~ 12mm Motorized Lens
  - Ultra WDR, Ultra Defog, Day/Night, 3D-DNR, Auto iris, AWB, AGC, BLC
  - IR Range of 50 Mtr., Micro SD, IP67
  - Mobile Software: iCMOB, gCMOB, CMS Software: KVMS Pro, vOptimus Pro

### CP-UNC-VH31ZL5-VMD

3MP Full HD WDR IP IR Vandal Dome Camera



- Features:
- 1/2.8" 3 MP CMOS Image Sensor
  - H.265 & MJPEG dual-stream encoding
  - Max 25/30fps@3MP(2048×1536)
  - 2.8 ~ 12mm Motorized Lens
  - Ultra WDR, Ultra Defog, Day/Night, 3D-DNR, Auto iris, AWB, AGC, BLC
  - IR Range of 50 Mtr., Micro SD, IP67 & IK10
  - Mobile Software: iCMOB, gCMOB, CMS Software: KVMS Pro, vOptimus Pro

### CP-UNC-BH31-VMD

3MP Full HD WDR Box Camera



- Features:
- 1/2.8" 3 MP CMOS Image Sensor
  - H.265 & MJPEG dual-stream encoding
  - Max 25/30fps@3MP(2048×1536)
  - C/CS Mount Lens
  - Ultra WDR, Ultra Defog, Day/Night, 3D-DNR, Auto iris, AWB, AGC, BLC
  - Micro SD, 2/1 Ch.Alarm I/O
  - Mobile Software: iCMOB, gCMOB, CMS Software: KVMS Pro, vOptimus Pro

### CP-UNC-BH20-MD

2MP Full HD WDR Box Camera



- Features:
- 1/1.9" 2 MP CMOS Image Sensor
  - H.264 & MJPEG dual-stream encoding
  - Max 25/30fps@1080P(1920×1080)
  - C/CS Mount Lens
  - Ultra WDR, Ultra Defog, Day/Night, 3D-DNR, Auto iris, AWB, AGC, BLC
  - Micro SD, 2/1 Ch.Alarm I/O
  - Mobile Software: iCMOB, gCMOB, CMS Software: KVMS Pro, vOptimus Pro

### CP-UNC-VH20ZL3-MD

2MP Full HD WDR IP IR Vandal Dome Camera



- Features:
- 1/1.9" 2 MP CMOS Image Sensor
  - H.264 & MJPEG dual-stream encoding
  - Max 50/60fps@1080P(1920×1080)
  - 4 ~ 8mm Motorized Lens
  - Ultra WDR, Ultra Defog, Day/Night, 3D-DNR, Auto iris, AWB, AGC, BLC
  - IR Range of 30 Mtr., Micro SD, IP66 & IK10
  - Mobile Software: iCMOB, gCMOB, CMS Software: KVMS Pro, vOptimus Pro

### CP-UNC-TH20ZL5-MD

2MP Full HD WDR IP Bullet Camera



- Features:
- 1/1.9" 2 MP CMOS Image Sensor
  - H.264 & MJPEG dual-stream encoding
  - Max 50/60fps@1080P(1920×1080)
  - 4 ~ 8mm Motorized Lens
  - Ultra WDR, Ultra Defog, Day/Night, 3D-DNR, Auto iris, AWB, AGC, BLC
  - IR Range of 50 Mtr., Micro SD, IP66
  - Mobile Software: iCMOB, gCMOB, CMS Software: KVMS Pro, vOptimus Pro

### CP-UNC-VH4K12ZL5-VM

4K Full HD IP Vandal Dome Camera



- Features:
- 1/1.7" 12MP CMOS Image Sensor
  - H.264 & MJPEG dual-stream encoding
  - Max 15fps@12Mp(4000×3000)
  - 4.1mm ~ 16.4mm motorized Lens
  - DWDR, Day/Night, 3D-DNR, Auto iris, AWB, AGC, BLC
  - IR Range of 50 Mtr., Micro SD, IP67
  - Mobile Software: iCMOB, gCMOB, CMS Software: KVMS Pro, vOptimus Pro

### CP-UNC-TH4K12ZL5-M

4K Full HD IP Bullet Camera



- Features:
- 1/1.7" 12MP CMOS Image Sensor
  - H.264 & MJPEG dual-stream encoding
  - Max 15fps@12Mp(4000×3000)
  - 4.1mm ~ 16.4mm motorized Lens
  - DWDR, Day/Night, 3D-DNR, Auto iris, AWB, AGC, BLC
  - IR Range of 50 Mtr., Micro SD, IP67
  - Mobile Software: iCMOB, gCMOB, CMS Software: KVMS Pro, vOptimus Pro

### CP-UNC-BH4K12-M

12MP Full HD IP Box Camera



- Features:
- 1/2.3" 12MP CMOS Image Sensor
  - H.264 & MJPEG dual-stream encoding
  - Max 15fps@12MP(4000×3000)
  - C/CS Mount Lens
  - DWDR, Day/Night, 3D-DNR, Auto iris, AWB, AGC, BLC
  - Micro SD, 2/1 Ch.Alarm I/O
  - Mobile Software: iCMOB, gCMOB, CMS Software: KVMS Pro, vOptimus Pro

### CP-UNC-EE40-M

4 MP Full HD IP Fish Eye Camera



- Features:
- 1/3" 4Megapixel PS CMOS Image Sensor
  - H.264 & MJPEG dual-stream encoding
  - Max 15fps@4MP(2560×1440) & 25/30fps@3MP(2304×1296)
  - 1.18mm Fixed Lens
  - Day/Night(electronic), 3D-DNR, AWB, AGC, BLC
  - IK10, Micro SD memory, PoE
  - Mobile Software: iCMOB, gCMOB, CMS Software: KVMS Pro, vOptimus Pro

### CP-UNC-EH60-M

6MP Full HD IP Fish Eye Camera



- Features:
- 1/1.8" 6MP CMOS Image Sensor
  - H.264 & MJPEG dual-stream encoding
  - Max 25/30fps@6MP(3072×2048)
  - 1.55mm Lens
  - DWDR, Day/Night, 3D-DNR, Auto iris, AWB, AGC, BLC
  - IR Range of 10 Mtr., IP67 & IK10
  - Mobile Software: iCMOB, gCMOB, CMS Software: KVMS Pro, vOptimus Pro

### CP-UNC-EH4K12L1-M

12MP Full HD IP IR Fish Eye Camera



- Features:
- 1/2.3" 12MP CMOS Image Sensor
  - H.264 & MJPEG dual-stream encoding
  - Max 15fps@12MP(4000×3000)
  - 1.57mm Lens
  - DWDR, Day/Night, 3D-DNR, Auto iris, AWB, AGC, BLC
  - IR Range of 10 Mtr., IP67 & IK10
  - Mobile Software: iCMOB, gCMOB, CMS Software: KVMS Pro, vOptimus Pro

### CP-UNC-PH13-MD

1.3MP HD Pin Hole Camera



- Features:
- 1/3" 1.3MP CMOS Image Sensor
  - H.264 & MJPEG dual-stream encoding
  - Max 25/30fps@1.3MP(1280×960)
  - 3.6mm Fixed Lens
  - Day/Night(Electronic), 3DNR, AWB,AGC,BLC
  - WDR, Micro SD, 1/1 Ch. Alarm I/O
  - Mobile Software: iCMOB, gCMOB, CMS Software: KVMS Pro, vOptimus Pro

the portfolio



**Distribution Series**

**CP-UNR-204/208/216T1-V2**

4/8/16 Ch. Network Video Recorder



**Features:**

- 4/8/16 Ch. with 1080p Realtime Live View
- H.264/MJPEG dual codec decoding
- Max 80Mbps incoming bandwidth
- Support Multi-brand network cameras
- HDMI / VGA simultaneous video output
- Support 1 SATA HDDs up to 6TB, 2 USB2.0
- Mobile Software: iCMOB, gCMOB, CMS Software:KVMS, KVMS Pro
- Without Hard disk

**CP-UNR-204/208/216T2-V2**

4/8/16 Ch. Network Video Recorder



**Features:**

- 4/8/16 Ch. with 1080p Realtime Live View
- H.264/MJPEG dual codec decoding
- Max 80Mbps incoming bandwidth
- Support Multi-brand network cameras
- HDMI / VGA simultaneous video output
- Support 2 SATA HDDs up to 12TB, 2 USB2.0,
- Mobile Software: iCMOB, gCMOB, CMS Software:KVMS, KVMS Pro
- Without Hard disk

**CP-UNR-416/432T2N**

16/32 Ch. Network Video Recorder



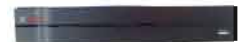
**Features:**

- 16/32 Ch. with 1080p Realtime Live View
- H.264/MJPEG dual codec decoding
- Max 200Mbps incoming bandwidth
- Support Multi-brand network cameras
- HDMI / VGA simultaneous video output
- Support 2 SATA HDDs up to 8TB, 2 USB2.0
- Mobile Software: iCMOB, gCMOB, CMS Software:KVMS, KVMS Pro
- Without Hard disk

**PoE Series**

**CP-UNR-204T1-P4V2**

4 Ch. Network Video Recorder



**Features:**

- 4 Ch. with 1080p Realtime Live View
- H.264/MJPEG dual codec decoding
- Max 80Mbps incoming bandwidth
- Support Multi-brand network cameras
- HDMI / VGA simultaneous video output
- Support 1 SATA HDDs up to 6TB, 2 USB2.0, 4 PoE ports
- Mobile Software: iCMOB, gCMOB, CMS Software:KVMS, KVMS Pro
- Without Hard disk

**CP-UNR-208T2-P8V2**

8 Ch. Network Video Recorder



**Features:**

- 8 Ch. with 1080p Realtime Live View
- H.264/MJPEG dual codec decoding
- Max 80Mbps incoming bandwidth
- Support Multi-brand network cameras
- HDMI / VGA simultaneous video output
- Support 2 SATA HDDs up to 12TB, 2 USB2.0, 8 PoE ports
- Mobile Software: iCMOB, gCMOB, CMS Software:KVMS, KVMS Pro
- Without Hard disk

**CP-UNR-4K416T2-P16V2**

16 Ch. 4K Network Video Recorder



**Features:**

- 16 Ch. with 1080p Realtime Live View
- H.265/H.264 dual codec decoding
- Max 200Mbps incoming bandwidth
- Support Multi-brand network cameras
- HDMI / VGA simultaneous video output
- Support 2 SATA HDDs up to 12TB, 2 USB2.0, 16 PoE ports
- Mobile Software: iCMOB, gCMOB, CMS Software:KVMS, KVMS Pro
- Without Hard disk

**CP-UNR-4K416T4-P16V2**

16 Ch. 4K Network Video Recorder



**Features:**

- 16 Ch. with 1080p Realtime Live View
- H.265/H.264 dual codec decoding
- Max 200Mbps incoming bandwidth
- Support Multi-brand network cameras
- HDMI / VGA simultaneous video output
- Support 4 SATA HDDs up to 24TB, 2 USB2.0, 16 PoE ports
- Mobile Software: iCMOB, gCMOB, CMS Software:KVMS, KVMS Pro
- Without Hard disk

**4K Series**

**CP-UNR-4K4082/4K4162/4K4322-V2**

8/16/32 Ch. Network Video Recorder



**Features:**

- Up to 8MP Resolution for Preview and Playback
- H.265/H.264/MJPEG dual codec decoding
- Max 256Mbps incoming bandwidth
- Support Multi-brand network cameras
- HDMI / VGA simultaneous video output
- Support 2 SATA HDDs up to 12TB, 2 USB2.0
- Mobile Software: iCMOB, gCMOB, CMS Software:KVMS, KVMS Pro
- Without Hard disk

**CP-UNR-4K4164/4K4324-V2**

16/32 Ch. Network Video Recorder



**Features:**

- Up to 8MP Resolution for Preview and Playback
- H.265/H.264/MJPEG dual codec decoding
- Max 256Mbps incoming bandwidth
- Support Multi-brand network cameras
- 2 HDMI / VGA simultaneous video output
- Support 4 SATA HDDs up to 24TB, 3 USB2.0
- Mobile Software: iCMOB, gCMOB, CMS Software:KVMS, KVMS Pro
- Without Hard disk

**CP-UNR-4K4168/4K4328-V2**

16/32 Ch. Network Video Recorder



**Features:**

- Upto 12MP Resolution Preview & Playback
- H.265/H.264/MJPEG dual codec decoding
- Max 256Mbps incoming bandwidth
- Support Multi-brand network cameras
- 2 HDMI / VGA simultaneous video output
- Support 8 SATA HDDs up to 48TB, 4 USB2.0
- Mobile Software: iCMOB, gCMOB, CMS Software:KVMS, KVMS Pro
- Without Hard disk

**CP-UNR-4K532/4K564R8-V2**

32/64 Ch. Network Video Recorder



**Features:**

- Upto 12MP Resolution Preview & Playback
- H.265/H.264/MJPEG dual codec decoding
- Max 320Mbps incoming bandwidth
- Support Multi-brand network cameras
- 2 HDMI / VGA simultaneous video output
- Support 8 SATA HDDs up to 48TB, 4 USB (2 USB 2.0, 2 USB 3.0), Support RAID
- Mobile Software: iCMOB, gCMOB, CMS Software:KVMS, KVMS Pro
- Without Hard disk

**High end NVR**

**CP-UNR-4K632/4K664R8-V2**

32/64 Ch. Ultra 4K Network Video Recorder



**Features:**

- Upto 12MP Resolution Preview & Playback
- H.265/H.264/MJPEG dual codec decoding
- Max 384Mbps incoming bandwidth
- Support Multi-brand network cameras
- 2 HDMI / VGA simultaneous video output
- Support 8 SATA HDDs up to 48TB, 4 USB (2 USB 2.0, 2 USB 3.0), Support RAID
- Mobile Software: iCMOB, gCMOB, CMS Software:KVMS, KVMS Pro
- Without Hard disk

**CP-UNR-4K6128R16-V2**

128 Ch. 4K Network Video Recorder



**Features:**

- Upto 12MP Resolution Preview & Playback
- H.265/H.264 & MJPEG dual-stream encoding
- Max 384Mbps incoming bandwidth
- 2 HDMI / VGA simultaneous video output
- Support 16 SATA HDDs up to 96TB, 4 USB (2 USB 2.0, 2 USB 3.0), Support RAID, Support iSCSI & Mini SAS, 1 eSATA port, Support 16 hot-swap HDDs
- Mobile Software: iCMOB, gCMOB, CMS Software:KVMS, KVMS Pro
- Without Hard disk

**CP-UNR-4K6128R16-EV2**

128 Ch. 4K Network Video Recorder



**Features:**

- Upto 12MP Resolution Preview & Playback
- H.265/H.264 & MJPEG dual-stream encoding
- Max 384Mbps incoming bandwidth
- 2 HDMI / VGA simultaneous video output
- Support 16 SATA HDDs up to 96TB, 4 USB (2 USB 2.0, 2 USB 3.0), Support RAID, Support iSCSI & Mini SAS, 1 eSATA port, Support 16 hot-swap HDDs, Redundant power supply module adopted
- Mobile Software: iCMOB, gCMOB, CMS Software:KVMS, KVMS Pro
- Without Hard disk

**CP-UNR-7256Q24**

256 Ch. Network Video Recorder



**Features:**

- Up to 128ch@1080P, 256ch@720P realtime recording
- H.265/H.264 & MJPEG dual-stream encoding
- Max 512Mbps incoming bandwidth
- 2 HDMI + 1 VGA ( Optional : 8 HDMI) simultaneous video output
- Support 24 SATA HDDs up to 144TB, 4 USB(2 USB 2.0, 2 USB 3.0) Support iSCSI & Mini SAS, Support RAID, 24 Hot-swap HDDs
- Mobile Software: iCMOB, gCMOB, CMS Software:KVMS, KVMS Pro
- Without Hard disk

**CP-UNR-7256Q24-E**

256 Ch. Network Video Recorder



**Features:**

- Up to 128ch@1080P, 256ch@720P realtime recording
- H.265/H.264 & MJPEG dual-stream encoding, Support iSCSI & Mini SAS
- Max 512Mbps incoming bandwidth
- HDMI + 1 VGA ( Optional : 8 HDMI , 1 VGA ) simultaneous video output
- Support 24 SATA HDDs up to 144TB, 4 USB2.0, Support RAID, 24 Hot-swap HDDs, Redundant Power
- Mobile Software: iCMOB, gCMOB, CMS Software:KVMS, KVMS Pro
- Without Hard disk

**CP-UNR-4K564R8-V2**

64 Ch. Network Video Recorder



► Features:

- Upto 12MP Resolution Preview & Playback
- H.265/H.264/MJPEG dual codec decoding
- Max 320Mbps incoming bandwidth
- Support Multi-brand network cameras
- 2 HDMI / VGA simultaneous video output
- Support 8 SATA HDDs up to 48TB, 4 USB (2 USB 2.0 , 2 USB 3.0 ), Support RAID
- Mobile Software: iCMOB, gCMOB, CMS Software:KVMS, KVMS Pro
- Without Hard disk

**CP-UNR-4K664R8/4K6128R8-EV2**

64/128 Ch. Network Video Recorder



► Features:

- Upto 12MP Resolution Preview & Playback
- H.265/H.264 & MJPEG dual-stream encoding
- Max 384Mbps incoming bandwidth
- Support Multi-brand network cameras
- 2 HDMI / VGA simultaneous video output
- Support 8 SATA HDDs up to 48TB, 4 USB2.0, Support RAID, Redundant Power, 1 eSATA
- Mobile Software: iCMOB, gCMOB, CMS Software:KVMS, KVMS Pro
- Without Hard disk

**CP-UNR-4K6128R8-V2**

128 Ch. Network Video Recorder



► Features:

- Upto 12MP Resolution Preview & Playback
- H.265/H.264 & MJPEG dual-stream encoding
- Max 384Mbps incoming bandwidth
- Support Multi-brand network cameras
- 2 HDMI / VGA simultaneous video output
- Support 8 SATA HDDs up to 48TB, 4 USB (2 USB 2.0 , 2 USB 3.0 ), Support RAID, Support iSCSI, 1 eSATA port
- Mobile Software: iCMOB, gCMOB, CMS Software:KVMS, KVMS Pro
- Without Hard disk

**CP-UNR-4K6128R16-V2**

128 Ch. Network Video Recorder



► Features:

- Upto 12MP Resolution Preview & Playback
- H.265/H.264 & MJPEG dual-stream encoding
- Max 384Mbps incoming bandwidth
- Support Multi-brand network cameras
- 2 HDMI / VGA simultaneous video output
- Support 16 SATA HDDs up to 96TB, 4 USB (2 USB 2.0 , 2 USB 3.0 ), Support RAID, Support iSCSI & Mini SAS, 1 eSATA port , Support 16 hot-swap HDDs
- Mobile Software: iCMOB, gCMOB, CMS Software:KVMS, KVMS Pro

**CP-UNR-4K6128R16-EV2**

128 Ch. Network Video Recorder



► Features:

- Upto 12MP Resolution Preview & Playback
- H.265/H.264 & MJPEG dual-stream encoding
- Max 384Mbps incoming bandwidth
- Support Multi-brand network cameras
- 2 HDMI / VGA simultaneous video output
- Support 16 SATA HDDs up to 96TB, 4 USB (2 USB 2.0, 2 USB 3.0), Support RAID, Support iSCSI & Mini SAS, 1 eSATA port, Support 16 hot-swap HDDs, Redundant power supply module adopted
- Mobile Software: iCMOB, gCMOB, CMS Software:KVMS, KVMS Pro
- Without Hard disk

**CP-UNR-7256Q24**

256 Ch. Network Video Recorder



► Features:

- H.265/H.264 & MJPEG dual-stream encoding
- Max 512Mbps incoming bandwidth
- Support Multi-brand network cameras
- 2 HDMI + 1 VGA ( Optional : 8 HDMI) simultaneous video output
- Support 24 SATA HDDs up to 144TB, 4 USB(2 USB 2.0 , 2 USB 3.0) Support iSCSI & Mini SAS, Support RAID, 24 Hot-swap HDDs
- Mobile Software: iCMOB, gCMOB, CMS Software:KVMS, KVMS Pro
- Without Hard disk

**CP-UNR-7256Q24-E**

256 Ch. Network Video Recorder



► Features:

- Up to 128ch@1080P, 256ch@720P realtime recording
- H.265/H.264 & MJPEG dual-stream encoding, Support iSCSI & Mini SAS
- Max 512Mbps incoming bandwidth
- Support Multi-brand network cameras
- HDMI + 1 VGA ( Optional : 8 HDMI , 1 VGA ) simultaneous video output
- Support 24 SATA HDDs up to 144TB, 4 USB2.0, Support RAID, 24 Hot-swap HDDs, Redundant Power
- Mobile Software: iCMOB, gCMOB, CMS Software:KVMS, KVMS Pro
- Without Hard disk



the portfolio





## PTZ - 2 MP

### CP-UNP-D2521L10-DP

2MP 25x HD IP IR PTZ Camera



#### ► Features:

- 1/2.8" 2MP CMOS Image Sensor
- H.265 & H.264 triple-stream encoding
- Max 50/60fps@1080P(1920×1080)
- 4.8 ~ 120mm Lens., 25x Zoom
- WDR, Day/Night, Ultra DNR, Auto iris, AWB, AGC, BLC
- IR Range of 100 Mtr, Upto 300 Presets, IP66, PoE Plus
- Mobile Software: iCMOB, gCMOB, CMS Software: KVMS Pro, vOptimus Pro

### CP-UNP-E2521L15-DAP

2MP 25x Full HD IP IR PTZ Camera



#### ► Features:

- 1/2.8" 2MP CMOS Image Sensor
- H.265 & H.264 triple-stream encoding
- Max 50/60fps@1080P(1920×1080)
- 4.8 ~ 120mm Lens., 25x Zoom
- WDR, Day/Night, Ultra DNR, Auto iris, AWB, AGC, BLC
- IR Range of 150 Mtr, Upto 300 Presets, IP66, PoE Plus
- Mobile Software: iCMOB, gCMOB, CMS Software: KVMS Pro, vOptimus Pro

### CP-UNP-E3021L15-DAP

2MP 30x Full HD IP IR PTZ Camera



#### ► Features:

- 1/2.8" 2MP CMOS Image Sensor
- H.265 & H.264 triple-stream encoding
- Max 50/60fps@1080P(1920×1080)
- 4.5 ~ 135mm Lens., 30x Zoom
- WDR, Day/Night, Ultra DNR, Auto iris, AWB, AGC, BLC
- IR Range of 150 Mtr, Upto 300 Presets, IP66, PoE Plus
- Mobile Software: iCMOB, gCMOB, CMS Software: KVMS Pro, vOptimus Pro

### CP-UNP-F2521L15-DAP

2MP 25x Full HD IP IR PTZ Camera



#### ► Features:

- 1/2.8" 2MP CMOS Image Sensor
- H.265 & H.264 triple-stream encoding
- Max 50/60fps@1080P(1920×1080)
- 4.8 ~ 120mm Lens., 25x Zoom
- WDR, Day/Night, Ultra DNR, Auto iris, AWB, AGC, BLC
- IR Range of 150 Mtr, Upto 300 Presets, IP66, PoE Plus
- Mobile Software: iCMOB, gCMOB, CMS Software: KVMS Pro, vOptimus Pro

### CP-UNP-F3021L15-DA

2MP 30x Full HD IP IR PTZ Camera



#### ► Features:

- 1/2.8" 2MP CMOS Image Sensor
- H.265 & H.264 triple-stream encoding
- Max 50/60fps@1080P(1920×1080)
- 4.5 ~ 135mm Lens., 30x Zoom
- WDR, Day/Night, Ultra DNR, Auto iris, AWB, AGC, BLC
- IR Range of 150 Mtr, Upto 300 Presets, IP66
- Mobile Software: iCMOB, gCMOB, CMS Software: KVMS Pro, vOptimus Pro

## PTZ - 4 MP

### CP-UNP-3041L10DA-P

4MP 30x Full HD IP IR PTZ Camera



#### ► Features:

- 1/3" 4Megapixel CMOS Image Sensor
- H.265 & H.264 triple-stream encoding
- Max25/30fps@4M(2592(H) x 1520(V) & 25/30fps@1080P(1920x1080)
- 4.5 ~ 135mm Lens., 30x Zoom
- WDR,Day/Night, Ultra DNR, Auto iris, Auto focus, AWB, AGC, BLC, HLC
- IR Range of 100 Mtr, Upto 300 Presets, IP66, PoE Plus, H.265
- Mobile Software: iCMOB, gCMOB, CMS Software: KVMS Pro, vOptimus Pro

### CP-UNP-3041L15DA

4MP 30x Full HD IP IR PTZ Camera



#### ► Features:

- 1/3" 4Megapixel CMOS Image Sensor
- H.265 & H.264 triple-stream encoding
- Max25/30fps@4M(2592(H) x 1520(V) & 25/30fps@1080P(1920x1080)
- 4.5 ~ 135mm Lens., 30x Zoom
- WDR,Day/Night, Ultra DNR (2D/3D) , AWB, AGC, BLC, HLC
- IR Range of 150 Mtr, Upto 300 Presets, IP66, H.265
- Mobile Software: iCMOB, gCMOB, CMS Software: KVMS Pro, vOptimus Pro

## PTZ - 5 MP

### CP-UNP-3051L20A

5MP 30x Full HD IP IR PTZ Camera



#### ► Features:

- 1/1.8" 5Megapixel CMOS Image Sensor
- H.265 & H.264 triple-stream encoding
- Max30fps@5Mp(2560(H) x 1920(V) & 50/60fps@1080P(1920x1080)
- 6mm ~ 180mm Lens., 30x Zoom
- DWDR, Day/Night, Ultra DNR (2D/3D) , AWB, AGC, BLC, HLC
- IR Range of 200 Mtr, Upto 300 Presets, IP67, H.265, IK10, Hi-PoE
- Mobile Software: iCMOB, gCMOB, CMS Software: KVMS Pro, vOptimus Pro

## Starlight Series

### CP-UNP-3020L20DA-P

2MP 30x Full HD Starlight IP IR PTZ Camera



#### ► Features:

- 1/1.8" 2Megapixel CMOS Image Sensor
- Triple Stream Encoding
- Max 25/30fps@1080P(1920×1080)
- 6mm ~ 180mm Lens., 30x Zoom
- WDR,Day/Night, Ultra DNR (2D/3D) , AWB, AGC, BLC, HLC
- IR Range of 200 Mtr, Upto 300 Presets, IP67, IK10, Hi-PoE
- Mobile Software: iCMOB, gCMOB, CMS Software: KVMS Pro, vOptimus Pro

### CP-UNP-3020R50DA-P

2MP 30x Full HD Starlight Laser IP IR PTZ Camera



#### ► Features:

- 1/1.9" 2Megapixel CMOS Image Sensor
- Triple Stream Encoding
- Max 25/30fps@1080P(1920×1080)
- 6mm ~ 180mm Lens., 30x Zoom
- WDR,Day/Night, Ultra DNR (2D/3D) , AWB, AGC, BLC, HLC
- IR Range of 500 Mtr, Upto 300 Presets, IP67, Hi-PoE
- Mobile Software: iCMOB, gCMOB, CMS Software: KVMS Pro, vOptimus Pro

### CP-UNP-4020R50A-P

2MP 40x Full HD Laser IP IR PTZ Camera



#### ► Features:

- 1/2.8" 2MP CMOS Image Sensor
- Triple Stream Encoding
- Max 25/30fps@1080P(1920×1080)
- 7.9mm ~ 316mm Lens., 40x Zoom
- DWDR, Day/Night, Ultra DNR, AWB, AGC, BLC
- IR Range of 500 Mtr, Upto 300 Presets, IP67, Hi-PoE
- Mobile Software: iCMOB, gCMOB, CMS Software: KVMS Pro, vOptimus Pro

the portfolio



### CP-GTC-D10L2

1 MP HD Astra IR Dome Camera - 20 Mtr.



- Features:
- 1 MP HQIS Pro Image Sensor
  - 25/30fps@720P
  - 3.6mm Lens (2.8 mm Optional)
  - Compatible with HDx, AHD, HDCVI, CVBS and HDTVI DVRs
  - Day/Night(ICR), AWB, AGC, BLC
  - IR Range of 20 M

### CP-GTC-D10L3

1 MP HD Astra IR Dome Camera - 30 Mtr.



- Features:
- 1 MP HQIS Pro Image Sensor
  - 25/30fps@720P
  - 6 mm Lens
  - Compatible with HDx, AHD, HDCVI, CVBS and HDTVI DVRs
  - Day/Night(ICR), AWB, AGC, BLC
  - IR Range of 30 M

### CP-GTC-D10FL4

1 MP HD Astra IR VF Dome Camera - 40 Mtr.



- Features:
- 1 MP HQIS Pro Image Sensor
  - 25/30fps@720P
  - 2.8 ~ 12 mm Varifocal Lens
  - Compatible with HDx, AHD, HDCVI, CVBS and HDTVI DVRs
  - Day/Night(ICR), AWB, AGC, BLC
  - IR Range of 40 M

### CP-GTC-T10L2C

1 MP HD Astra IR Bullet Camera - 20 Mtr.



- Features:
- 1 MP HQIS Pro Image Sensor
  - 25/30fps@720P
  - 3.6 mm Lens
  - Compatible with HDx, AHD, HDCVI, CVBS and HDTVI DVRs
  - Day/Night(ICR), AWB, AGC, BLC
  - IR Range of 20 M, IP66

### CP-GTC-T10L2

1 MP HD Astra IR Bullet Camera - 20 Mtr.



- Features:
- 1 MP HQIS Pro Image Sensor
  - 25/30fps@720P
  - 3.6mm Lens (2.8 mm Optional)
  - Compatible with HDx, AHD, HDCVI, CVBS and HDTVI DVRs
  - Day/Night(ICR), AWB, AGC, BLC
  - IR Range of 20 M, IP66

### CP-GTC-T10L3

1 MP HD Astra IR Bullet Camera - 30 Mtr.



- Features:
- 1 MP HQIS Pro Image Sensor
  - 25/30fps@720P
  - 6 mm Lens
  - Compatible with HDx, AHD, HDCVI, CVBS and HDTVI DVRs
  - Day/Night(ICR), AWB, AGC, BLC
  - IR Range of 30 M, IP66

### CP-GTC-T10FL5

1 MP HD Astra IR VF Bullet Camera - 50 Mtr.



- Features:
- 1 MP HQIS Pro Image Sensor
  - 25/30fps@720P
  - 2.8 ~ 12 mm Varifocal Lens
  - Compatible with HDx, AHD, HDCVI, CVBS and HDTVI DVRs
  - Day/Night(ICR), AWB, AGC, BLC
  - IR Range of 50 M, IP66

### CP-GTC-T10R5

1 MP HD Astra Array Bullet Camera - 50 Mtr.



- Features:
- 1 MP HQIS Pro Image Sensor
  - 25/30fps@720P
  - 8mm
  - Compatible with HDx, AHD, HDCVI, CVBS and HDTVI DVRs
  - Day/Night(ICR), AWB, AGC, BLC
  - IR Range of 50 M, IP66

### CP-GTC-T10R7

1 MP HD Astra Array Bullet Camera - 70 Mtr.



- Features:
- 1 MP HQIS Pro Image Sensor
  - 25/30fps@720P
  - 16mm
  - Compatible with HDx, AHD, HDCVI, CVBS and HDTVI DVRs
  - Day/Night(ICR), AWB, AGC, BLC
  - IR Range of 70 M, IP66

### CP-GTC-D13L2

1.3 MP HD Astra IR Dome Camera - 20 Mtr.



- Features:
- 1.3 MP HQIS Pro Image Sensor
  - 25/30fps@1.3MP
  - 3.6 mm Lens
  - Compatible with HDx, AHD, HDCVI, CVBS and HDTVI DVRs
  - Day/Night(ICR), AWB, AGC, BLC
  - IR Range of 20 M

### CP-GTC-D13L3

1.3 MP HD Astra IR Dome Camera - 30 Mtr.



- Features:
- 1.3 MP HQIS Pro Image Sensor
  - 25/30fps@1.3MP
  - 6 mm Lens
  - Compatible with HDx, AHD, HDCVI, CVBS and HDTVI DVRs
  - Day/Night(ICR), AWB, AGC, BLC
  - IR Range of 30 M

### CP-GTC-D13FL4

1.3 MP HD Astra IR VF Dome Camera - 40 Mtr.



- Features:
- 1.3 MP HQIS Pro Image Sensor
  - 25/30fps@1.3MP
  - 2.8 ~ 12 mm Varifocal Lens
  - Compatible with HDx, AHD, HDCVI, CVBS and HDTVI DVRs
  - Day/Night(ICR), AWB, AGC, BLC
  - IR Range of 40 M

### CP-GTC-T13L2C

1.3 MP HD Astra IR Bullet Camera - 20 Mtr.



- Features:
- 1/3" 1.3 MP HQIS Pro Image Sensor
  - 25/30fps@1.3MP
  - 3.6 mm Lens
  - Compatible with HDx, AHD, HDCVI, CVBS and HDTVI DVRs
  - Day/Night(ICR), AWB, AGC, BLC
  - IR Range of 20 M

### CP-GTC-T13L2

1.3 MP HD Astra IR Bullet Camera - 20 Mtr.



- Features:
- 1.3 MP HQIS Pro Image Sensor
  - 25/30fps@1.3MP
  - 3.6 mm Lens
  - Compatible with HDx, AHD, HDCVI, CVBS and HDTVI DVRs
  - Day/Night(ICR), AWB, AGC, BLC
  - IR Range of 20 M

### CP-GTC-T13L3

1.3 MP HD Astra IR Bullet Camera - 30 Mtr.



- Features:
- 1.3 MP HQIS Pro Image Sensor
  - 25/30fps@1.3MP
  - 6 mm Lens
  - Compatible with HDx, AHD, HDCVI, CVBS and HDTVI DVRs
  - Day/Night(ICR), AWB, AGC, BLC
  - IR Range of 30 M

### CP-GTC-T13FL5

1.3 MP HD Astra IR Bullet Camera - 50 Mtr.



- Features:
- 1.3 MP HQIS Pro Image Sensor
  - 25/30fps@1.3MP
  - 2.8 ~ 12 mm Lens
  - Compatible with HDx, AHD, HDCVI, CVBS and HDTVI DVRs
  - Day/Night(ICR), AWB, AGC, BLC
  - IR Range of 50 M, IP66

### CP-GTC-T13R5

1.3 MP HD Astra Array Bullet Camera - 50 Mtr.



- Features:
- 1.3 MP HQIS Pro Image Sensor
  - 25/30fps@1.3MP
  - 8mm
  - Compatible with HDx, AHD, HDCVI, CVBS and HDTVI DVRs
  - Day/Night(ICR), AWB, AGC, BLC
  - IR Range of 50 M, IP66

### CP-GTC-T13R7

1.3 MP HD Astra Array Bullet Camera - 70 Mtr.



- Features:
- 1.3 MP HQIS Pro Image Sensor
  - 25/30fps@1.3MP
  - 16mm
  - Compatible with HDx, AHD, HDCVI, CVBS and HDTVI DVRs
  - Day/Night(ICR), AWB, AGC, BLC
  - IR Range of 70 M, IP66

### CP-GTC-D20L2

2 MP HD Astra IR Dome Camera - 20 Mtr.



- Features:
- 1/2.7" 2 MP HQIS Pro Image Sensor
  - 25/30fps@2MP
  - 3.6 mm Lens
  - Compatible with HDx, AHD, HDCVI, CVBS and HDTVI DVRs
  - Day/Night(ICR), AWB, AGC, BLC
  - IR Range of 20 M

### CP-GTC-D20L3

2 MP HD Astra IR Dome Camera - 30 Mtr.



- Features:
- 1/2.7" 2 MP HQIS Pro Image Sensor
  - 25/30fps@2MP
  - 6 mm Lens
  - Compatible with HDx, AHD, HDCVI, CVBS and HDTVI DVRs
  - Day/Night(ICR), AWB, AGC, BLC
  - IR Range of 30 M

### CP-GTC-D20FL4

2 MP HD Astra IR VF Dome Camera - 40 Mtr.



- Features:
- 1/2.7" 2 MP HQIS Pro Image Sensor
  - 25/30fps@2MP
  - 2.8 ~ 12 mm Lens
  - Compatible with HDx, AHD, HDCVI, CVBS and HDTVI DVRs
  - Day/Night(ICR), AWB, AGC, BLC
  - IR Range of 40 M

### CP-GTC-T20L2C

2 MP HD Astra IR Bullet Camera - 20 Mtr.



- Features:
- 1/2.7" 2 MP HQIS Pro Image Sensor
  - 25/30fps@2MP
  - 3.6 mm Lens
  - Compatible with HDx, AHD, HDCVI, CVBS and HDTVI DVRs
  - Day/Night(ICR), AWB, AGC, BLC
  - IR Range of 20 M, IP66

### CP-GTC-T20L2

2 MP HD Astra IR Bullet Camera - 20 Mtr.



- Features:
- 1/2.7" 2 MP HQIS Pro Image Sensor
  - 25/30fps@2MP
  - 3.6 mm Lens
  - Compatible with HDx, AHD, HDCVI, CVBS and HDTVI DVRs
  - Day/Night(ICR), AWB, AGC, BLC
  - IR Range of 20 M, IP66

### CP-GTC-T20L3

2 MP HD Astra IR Bullet Camera - 30 Mtr.



- Features:
- 1/2.7" 2 MP HQIS Pro Image Sensor
  - 25/30fps@2MP
  - 6mm Lens(3.6mm Optional)
  - Compatible with HDx, AHD, HDCVI, CVBS and HDTVI DVRs
  - Day/Night(ICR), AWB, AGC, BLC
  - IR Range of 30 M, IP66

### CP-GTC-T20FL5

2 MP HD Astra IR VF Bullet Camera - 50 Mtr.



- Features:
- 1/2.7" 2 MP HQIS Pro Image Sensor
  - 25/30fps@2MP
  - 2.8 ~ 12 mm Lens
  - Compatible with HDx, AHD, HDCVI, CVBS and HDTVI DVRs
  - Day/Night(ICR), AWB, AGC, BLC
  - IR Range of 50 M, IP66

### CP-GTC-T20R5

2 MP HD Astra Array Bullet Camera - 50 Mtr



- Features:
- 1/2.7" 2 MP HQIS Pro Image Sensor
  - 25/30fps@2MP
  - 8mm Lens
  - Compatible with HDx, AHD, HDCVI, CVBS and HDTVI DVRs
  - Day/Night(ICR), AWB, AGC, BLC
  - Array Range of 50 M, IP66

### CP-GTC-T20R7

2 MP HD Astra Array Bullet Camera - 70 Mtr



- Features:
- 1/2.7" 2 MP HQIS Pro Image Sensor
  - 25/30fps@2MP
  - 16mm Lens
  - Compatible with HDx, AHD, HDCVI, CVBS and HDTVI DVRs
  - Day/Night(ICR), AWB, AGC, BLC
  - Array Range of 70 M, IP66

### CP-GTC-D24L2

2.4 MP Astra HD IR Dome Camera - 20 Mtr



- Features:
- 1/2.7" 2.4 MP HQIS Pro Image Sensor
  - 25/30fps@2.4MP
  - 3.6 mm Lens
  - Compatible with HDx, AHD, HDCVI, CVBS and HDTVI DVRs
  - Day/Night(ICR), AWB, AGC, BLC
  - IR Range of 20 M

### CP-GTC-D24L3

2.4 MP Astra HD IR Dome Camera - 30 Mtr



- Features:
- 1/2.7" 2.4 MP HQIS Pro Image Sensor
  - 25/30fps@2.4MP
  - 6 mm Lens
  - Compatible with HDx, AHD, HDCVI, CVBS and HDTVI DVRs
  - Day/Night(ICR), AWB, AGC, BLC
  - IR Range of 30 M, IP66

### CP-GTC-D24FL4

2.4 MP Astra HD VF IR Dome Camera - 40 Mtr



- Features:
- 1/2.7" 2.4 MP HQIS Pro Image Sensor
  - 25/30fps@2.4MP
  - 2.8 ~ 12 mm Lens
  - Compatible with HDx, AHD, HDCVI, CVBS and HDTVI DVRs
  - Day/Night(ICR), AWB, AGC, BLC
  - IR Range of 40 M, IP66

### CP-GTC-T24L2C

2.4 MP Astra HD IR Bullet Camera - 20 Mtr



- Features:
- 1/2.7" 2.4MP HD Color Image sensor
  - 25/30fps@2.4MP
  - 3.6 mm Lens
  - Compatible with HDx, AHD, HDCVI, CVBS and HDTVI DVRs
  - Day/Night(ICR), AWB, AGC, BLC
  - IR Range of 20 M, IP66

### CP-GTC-T24L2

2.4 MP Astra HD IR Bullet Camera - 20 Mtr



- Features:
- 1/2.7" 2.4MP HD Color Image sensor
  - 25/30fps@2.4MP
  - 3.6mm Lens (2.8 mm Optional)
  - Compatible with HDx, AHD, HDCVI, CVBS and HDTVI DVRs
  - Day/Night(ICR), AWB, AGC, BLC
  - IR Range of 20 M, IP66



## CP-GTC-T24L3

2.4 MP Astra HD IR Bullet Camera - 30 Mtr



- Features:
- 1/2.7" 2.4MP HD Color Image sensor
  - 25/30fps@2.4MP
  - 6 mm Lens
  - Compatible with HDx, AHD, HDCVI, CVBS and HDTVI DVRs
  - Day/Night(ICR), AWB, AGC, BLC
  - IR Range of 30 M, IP66

## CP-GTC-T24FL5

2.4 MP Astra HD VF IR Bullet Camera - 50 Mtr



- Features:
- 1/2.7" 2.4MP HD Color Image sensor
  - 25/30fps@2.4MP
  - 2.8 ~ 12 mm Lens
  - Compatible with HDx, AHD, HDCVI, CVBS and HDTVI DVRs
  - Day/Night(ICR), AWB, AGC, BLC
  - Array Range of 50 M, IP66

## CP-GTC-T24R5

2.4 MP Astra HD Array Bullet Camera - 50 Mtr



- Features:
- 1/2.7" 2.4MP HD Color Image sensor
  - 25/30fps@2.4MP
  - 8mm Lens
  - Compatible with HDx, AHD, HDCVI, CVBS and HDTVI DVRs
  - Day/Night(ICR), AWB, AGC, BLC
  - Array Range of 50 M, IP66

## CP-GTC-T24R7

2.4 MP Astra HD Array Bullet Camera - 70 Mtr



- Features:
- 1/2.7" 2.4MP HD Color Image sensor
  - 25/30fps@2.4MP
  - 16mm Lens
  - Compatible with HDx, AHD, HDCVI, CVBS and HDTVI DVRs
  - Day/Night(ICR), AWB, AGC, BLC
  - Array Range of 70 M, IP66



# the portfolio



### CP-ER-0404/0804E1-T

4/8 Ch. Astra HD DVR



- Features:
- 4/8 Ch. Video, 4/8 Ch. Audio
  - 1080P Lite: 4Ch..@25fp, 1080P Lite: 8Ch..@12fps
  - 1 SATA port, 2 USB, 1 RJ45
  - HDMI / VGA simultaneous video output
  - Mobile Software: RMOB, CMS Software:RVMS
  - Without Hard disk

### CP-ER-1602E1-T

16 Ch. Astra HD DVR



- Features:
- 16 Ch. Video, 2 Ch. Audio
  - 1080P Lite:16Ch.@12fps
  - 1 SATA port, 2 USB, 1 RJ45
  - HDMI / VGA simultaneous video output
  - Mobile Software: RMOB, CMS Software:RVMS
  - Without Hard disk

### CP-ER-0404/0804K1-T

4/8 Ch. Astra HD DVR



- Features:
- 4/8 Ch. Video, 4/8 Ch. Audio
  - 1080P: 4Ch.@15fps / 1080P: 4Ch.@12fps
  - 1 SATA port, 2 USB, 1 RJ45
  - HDMI / VGA simultaneous video output
  - Mobile Software: RMOB, CMS Software:RVMS
  - Without Hard disk

### CP-ER-1602K1-T

16 Ch. Astra HD DVR



- Features:
- 16 Ch. Video, 2 Ch. Audio
  - 1080P: 4Ch.@12fps
  - 1 SATA port, 2 USB, 1 RJ45
  - HDMI / VGA simultaneous video output
  - Mobile Software: RMOB, CMS Software:RVMS
  - Without Hard disk

### CP-ER-0404/0808/1606E2-T

4/8/16 Ch. Astra HD DVR



- Features:
- 4/8/16 Ch. Video, 4/8/6 Ch. Audio
  - 1080P Lite:4Ch.@25fp / 1080P Lite:8Ch.@12fps / 1080P Lite:16Ch.@12fps
  - 2 SATA port, 2 USB, 1 RJ45
  - HDMI / VGA simultaneous video output
  - Mobile Software: RMOB, CMS Software:RVMS
  - Without Hard disk

### CP-ER-3216E2-T

32 Ch. Astra HD DVR



- Features:
- 32 Ch. Video, 16 Ch. Audio
  - 1080P Lite:32Ch.@12fps
  - 2 SATA port, 2 USB, 1 RJ45
  - HDMI / VGA simultaneous video output
  - Mobile Software: RMOB, CMS Software:RVMS
  - Without Hard disk

### CP-ER-0404/0808/1604K2-T

4/8/16 Ch. Astra HD DVR



- Features:
- 4/8/16 Ch. Video, 4/8/4 Ch. Audio
  - 1080P: 4Ch.@15fps / 1080P: 4Ch.@12fps
  - 2 SATA port, 2 USB, 1 RJ45
  - HDMI / VGA simultaneous video output
  - Mobile Software: RMOB, CMS Software:RVMS
  - Without Hard disk

### CP-ER-H1616E4-V2

16 Ch. HDX DVR



- Features:
- 16 Ch. Video, 16 Ch. Audio
  - 720p: 16Ch.@25fps
  - 4 SATA port, 2 USB, 1 RJ45
  - HDMI / VGA simultaneous video output
  - Mobile Software: RMOB, CMS Software:RVMS
  - Without Hard disk

### CP-ER-H3216P4-V2

32 Ch. HDX DVR



- Features:
- 32 Ch. Video, 16 Ch. Audio
  - 1080P Lite: 32Ch.@15fps
  - 4 SATA port, 2 USB, 1 RJ45
  - HDMI / VGA simultaneous video output
  - Mobile Software: RMOB, CMS Software:RVMS
  - Without Hard disk

### CP-ER-H0808/1616K4-V2

8/16 Ch. HDX DVR



- Features:
- 8/16 Ch. Video, 8/16 Ch. Audio
  - 1080P: 8Ch.@25fps / 1080P: 16Ch.@12fps
  - 4 SATA port, 2 USB, 1 RJ45
  - HDMI / VGA simultaneous video output
  - Mobile Software: RMOB, CMS Software:RVMS
  - Without Hard disk

### CP-ER-H1616/3216P8-V2

16/32 Ch. HDX DVR



- Features:
- 16/32 Ch. Video, 16 Ch. Audio
  - 720p: 16Ch.@12fps / 1080P Lite: 32Ch.@15fps
  - 8 SATA port, 2 USB, 1 RJ45
  - HDMI / VGA simultaneous video output
  - Mobile Software: RMOB, CMS Software:RVMS
  - Without Hard disk

### CP-ER-H0808/1616K8-V2

8/16 Ch. HDX DVR



- Features:
- 8/16 Ch. Video, 8/16 Ch. Audio
  - 1080P: 8Ch.@25fps / 1080P: 16Ch.@12fps
  - 8 SATA port, 2 USB, 1 RJ45
  - HDMI / VGA simultaneous video output
  - Mobile Software: RMOB, CMS Software:RVMS
  - Without Hard disk

the portfolio



### CP-ENC-D13L3

1.3 MP Fixed IR Dome Camera



- Features:
- 1/3" 1.3MP PS CMOS Image Sensor
  - Support with H.264 video compression
  - 3.6mm fixed lens
  - DWDR, Day/Night(ICR), AWB, AGC, BLC
  - Max. IR LEDs length 30Mtr.
  - Mobile Software: RMOB, CMS Software: RVMS

### CP-ENC-T13L3

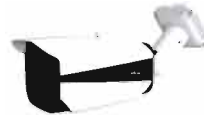
1.3 MP Fixed IR Bullet Camera



- Features:
- 1/3" 1.3MP PS CMOS Image Sensor
  - Support with H.264 video compression
  - 3.6mm fixed lens
  - DWDR, Day/Night(ICR), AWB, AGC, BLC
  - Max. IR LEDs length 30Mtr., IP66
  - Mobile Software: RMOB, CMS Software: RVMS

### CP-ENC-T13L3-VM

1.3 MP Fixed IR Bullet Camera



- Features:
- 1/3" 1.3MP PS CMOS Image Sensor
  - Support with H.264 video compression
  - 3.6mm fixed lens
  - DWDR, Day/Night(ICR), AWB, AGC, BLC
  - Max. IR LEDs length 30m, IP66, SD Card, 1 Ch In/ 1 Ch Out audio
  - Mobile Software: RMOB, CMS Software: RVMS

### CP-ENC-V13FL4

1.3 MP Vandal VFIR Dome Camera



- Features:
- 1/3" 1.3MP PS CMOS Image Sensor
  - Support with H.264 video compression
  - 2.8-12mm Varifocal lens
  - DWDR, Day/Night(ICR), AWB, AGC, BLC
  - Max. IR LEDs length -40Mtr., IP66, IK10
  - Mobile Software: RMOB, CMS Software: RVMS

### CP-ENC-T13FL5

1.3 MP Vari-focal Lens IR Bullet Camera



- Features:
- 1/3" 1.3MP PS CMOS Image Sensor
  - Support with H.264 video compression
  - 2.8-12mm Varifocal lens
  - DWDR, Day/Night(ICR), AWB, AGC, BLC
  - Max. IR LEDs length -50Mtr., IP66
  - Mobile Software: RMOB, CMS Software: RVMS

### CP-ENC-V13FL4-VM

1.3 MP Vandal VFIR Dome Camera



- Features:
- 1/3" 1.3MP PS CMOS Image Sensor
  - Support with H.264 video compression
  - 2.8-12mm Varifocal lens
  - DWDR, Day/Night(ICR), AWB, AGC, BLC
  - Max. IR LEDs length -40Mtr., IP66, IK10, SD Card, 1 Ch in/1 Ch out audio
  - Mobile Software: RMOB, CMS Software: RVMS

### CP-ENC-T13FL5-VM

1.3 MP Vari-focal Lens IR Bullet Camera



- Features:
- 1/3" 1.3MP PS CMOS Image Sensor
  - Support with H.264 video compression
  - 2.8-12mm Varifocal lens
  - DWDR, Day/Night(ICR), AWB, AGC, BLC
  - Max. IR LEDs length -50Mtr., IP66, SD Card, 1 Ch in/1 Ch out audio
  - Mobile Software: RMOB, CMS Software: RVMS

### CP-ENC-D20L3

2 MP Fixed IR Dome Camera



- Features:
- 1/2.7" 2MP CMOS Image Sensor
  - Support with H.264 video compression
  - 3.6mm fixed lens
  - DWDR, Day/Night(ICR), AWB, AGC, BLC
  - Max. IR LEDs length 30Mtr., IP66
  - Mobile Software: RMOB, CMS Software: RVMS

### CP-ENC-T20L3

2 MP Fixed IR Bullet Camera



- Features:
- 1/2.7" 2MP CMOS Image Sensor
  - Support with H.264 video compression
  - 3.6mm fixed lens
  - DWDR, Day/Night(ICR), AWB, AGC, BLC
  - Max. IR LEDs length 30Mtr., IP66
  - Mobile Software: RMOB, CMS Software: RVMS

### CP-ENC-T20L3-VM

2 MP Fixed IR Bullet Camera



- Features:
- 1/2.7" 2MP CMOS Image Sensor
  - Support with H.264 video compression
  - 3.6mm fixed lens
  - DWDR, Day/Night(ICR), AWB, AGC, BLC
  - Max. IR LEDs length 30Mtr., IP66, SD Card, 1 Ch in/1 Ch out audio
  - Mobile Software: RMOB, CMS Software: RVMS

### CP-ENC-V20FL4

2 MP Vandal VFIR Dome Camera



- Features:
- 1/2.7" 2MP CMOS Image Sensor
  - Support with H.264 video compression
  - 2.8-12mm Varifocal lens
  - DWDR, Day/Night(ICR), AWB, AGC, BLC
  - Max. IR LEDs length -40Mtr., IP66, IK10
  - Mobile Software: RMOB, CMS Software: RVMS

### CP-ENC-T20FL5

2 MP Vari-focal Lens IR Bullet Camera



- Features:
- 1/2.7" 2MP CMOS Image Sensor
  - Support with H.264 video compression
  - 2.8-12mm Varifocal lens
  - DWDR, Day/Night(ICR), AWB, AGC, BLC
  - Max. IR LEDs length -50Mtr., IP66
  - Mobile Software: RMOB, CMS Software: RVMS

### CP-ENC-V20FL4-VM

2 MP Vandal VFIR Dome Camera



- Features:
- 1/2.7" 2MP CMOS Image Sensor
  - Support with H.264 video compression
  - 2.8-12mm Varifocal lens
  - DWDR, Day/Night(ICR), AWB, AGC, BLC
  - Max. IR LEDs length -40Mtr., IP66, IK10, SD Card, 1 Ch in/1 Ch out audio
  - Mobile Software: RMOB, CMS Software: RVMS

### CP-ENC-T20FL5-VM

2 MP Vari-focal Lens IR Bullet Camera



- Features:
- 1/2.7" 2MP CMOS Image Sensor
  - Support with H.264 video compression
  - 2.8-12mm Varifocal lens
  - DWDR, Day/Night(ICR), AWB, AGC, BLC
  - Max. IR LEDs length -50Mtr., IP66, SD Card, 1 Ch in/1 Ch out audio
  - Mobile Software: RMOB, CMS Software: RVMS

### CP-ENC-V21L3-D

2 MP Vandal IRDome Camera



- Features:
- 1/2.7" 2MP CMOS Image Sensor
  - Support with H.265/H.264 video compression
  - 3.6-6mm fixed lens
  - WDR(100dB), Day/Night(ICR), AWB, AGC, BLC
  - Max. IR LEDs length 30Mtr., IP66, IK10
  - Mobile Software: RMOB, CMS Software: RVMS

### CP-ENC-T21L3-D

2 MP Fixed IR Bullet Camera



- Features:
- 1/2.7" 2MP CMOS Image Sensor
  - Support with H.265/H.264 video compression
  - 3.6-6mm fixed lens
  - WDR(100dB), Day/Night(ICR), AWB, AGC, BLC
  - Max. IR LEDs length 30Mtr., IP66
  - Mobile Software: RMOB, CMS Software: RVMS



### CP-ENC-T21L3-VMD

2 MP Fixed IR Bullet Camera



- Features:
- 1/2.7" 2MP CMOS Image Sensor
  - Support with H.265/H.264 video compression
  - 3.6-6mm fixed lens
  - WDR(100dB), Day/Night(ICR), AWB, AGC, BLC
  - Max. IR LEDs length 30Mtr., IP67, SD Card, 1 Ch in/1 Ch out audio
  - Mobile Software: RMOB, CMS Software: RVMS

### CP-ENC-V21ZL4-VMD

2 MP Vandal Motorized IR Dome Camera



- Features:
- 1/2.7" 2MP CMOS Image Sensor
  - Support with H.265/H.264 video compression
  - 2.8-12mm motorized lens
  - WDR(100dB), Day/Night(ICR), AWB, AGC, BLC
  - Max. IR LEDs length 40Mtr., IP68, IK10, SD Card, 1 Ch in/1 Ch out audio
  - Mobile Software: RMOB, CMS Software: RVMS

### CP-ENC-T21ZL5-VMD

2 MP Motorized Lens IR Bullet Camera



- Features:
- 1/2.7" 2MP CMOS Image Sensor
  - Support with H.265/H.264 video compression
  - 2.8-12mm motorized lens
  - WDR(100dB), Day/Night(ICR), AWB, AGC, BLC
  - Max. IR LEDs length 50Mtr., IP68, SD Card, 1 Ch in/1 Ch out audio
  - Mobile Software: RMOB, CMS Software: RVMS

### CP-ENC-V41L3-D

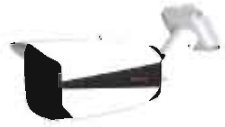
4 MP Vandal IR Dome Camera



- Features:
- 1/3" 4 MP CMOS Image Sensor
  - Support with H.265/H.264 video compression
  - 3.6-6mm fixed lens
  - WDR(100dB), Day/Night(ICR), AWB, AGC, BLC
  - Max. IR LEDs length 30Mtr., IP68, IK10
  - Mobile Software: RMOB, CMS Software: RVMS

### CP-ENC-T41L3-D

4 MP Fixed IR Bullet Camera



- Features:
- 1/3" 4 MP CMOS Image Sensor
  - Support with H.265/H.264 video compression
  - 3.6-6mm fixed lens
  - WDR(100dB), Day/Night(ICR), AWB, AGC, BLC
  - Max. IR LEDs length 30Mtr., IP68
  - Mobile Software: RMOB, CMS Software: RVMS

### CP-ENC-T41L3-VMD

4 MP Fixed IR Bullet Camera



- Features:
- 1/3" 4 MP CMOS Image Sensor
  - Support with H.265/H.264 video compression
  - 3.6-6mm fixed lens
  - WDR(100dB), Day/Night(ICR), AWB, AGC, BLC
  - Max. IR LEDs length 30Mtr., IP68, SD Card, 1 Ch in/1 Ch out audio
  - Mobile Software: RMOB, CMS Software: RVMS

### CP-ENC-T41L8-D

4 MP Fixed IR Bullet Camera



- Features:
- 1/3" 4 MP CMOS Image Sensor
  - Support with H.265/H.264 video compression
  - 3.6/6/8/12mm lens
  - WDR(100dB), Day/Night(ICR), AWB, AGC, BLC
  - Max. IR LEDs length 80Mtr., IP68
  - Mobile Software: RMOB, CMS Software: RVMS

### CP-ENC-T41L8-VMD

4 MP Fixed IR Bullet Camera



- Features:
- 1/3" 4 MP CMOS Image Sensor
  - Support with H.265/H.264 video compression
  - 3.6/6/8/12mm lens
  - WDR(100dB), Day/Night(ICR), AWB, AGC, BLC
  - Max. IR LEDs length 90Mtr., IP68, SD Card, 1 Ch in/1 Ch out audio
  - Mobile Software: RMOB, CMS Software: RVMS

### CP-ENC-V41ZL4-VMD

4 MP Vandal Motorized IR Dome Camera



- Features:
- 1/3" 4 MP CMOS Image Sensor
  - Support with H.265/H.264 video compression
  - 2.8-12mm motorized lens
  - WDR(100dB), Day/Night(ICR), AWB, AGC, BLC
  - Max. IR LEDs length 40Mtr., IP68, IK10, SD Card, 1 Ch in/1 Ch out audio
  - Mobile Software: RMOB, CMS Software: RVMS

### CP-ENC-T41ZL5-VMD

4 MP Motorized Lens IR Bullet Camera



- Features:
- 1/3" 4 MP CMOS Image Sensor
  - Support with H.265/H.264 video compression
  - 2.8-12mm motorized lens
  - WDR(100dB), Day/Night(ICR), AWB, AGC, BLC
  - Max. IR LEDs length 50Mtr., IP68, SD Card, 1 Ch in/1 Ch out audio
  - Mobile Software: RMOB, CMS Software: RVMS



the portfolio

### ENP-F2013L12

1.3 MP 20x IR PTZ Camera



- Features:
- 1/3" 1.3MP CMOS Image Sensor
  - 1.3MP @(1 ~ 25 fps)
  - 4.7 ~ 94mm (20x optical zoom)
  - Up to 80 presets, up to 1 auto scan, up to 4 tour, up to 1 pattern
  - Support with H.264 video compression
  - IR Range of 120 Mtr, IP66

### ENP-F2020L12

2 MP 20x IR PTZ Camera



- Features:
- 1/2.9" 2MP CMOS Image Sensor
  - 2MP @(1 ~ 25 fps)
  - 4.7 ~ 94mm (20x optical zoom)
  - Up to 80 presets, up to 1 auto scan, up to 4 tour, up to 1 pattern
  - Support with H.264 video compression
  - IR Range of 120 Mtr, IP66

### ENP-F2041L12

4 MP 20x IR PTZ Camera



- Features:
- 1/3" 4MP CMOS Image Sensor
  - 2MP @(1 ~ 25 fps)
  - 4.7 ~ 94mm (20x optical zoom)
  - Up to 80 presets, up to 1 auto scan, up to 4 tour, up to 1 pattern
  - Support with H.265 video compression
  - IR Range of 120 Mtr, IP66

### ENP-S2013L12

1.3 MP 20x IR PTZ Camera



- Features:
- 1/3" 1.3MP CMOS Image Sensor
  - 1.3MP @(1 ~ 25 fps)
  - 4.7 ~ 94mm (20x optical zoom)
  - Up to 255 presets, up to 4 auto scan, up to 4 tour, up to 4 pattern
  - Support with H.264 video compression
  - IR Range of 120 Mtr, IP66

### ENP-S3021L12

2 MP 30x IR PTZ Camera



- Features:
- 1/2.9" 2MP CMOS Image Sensor
  - 2MP @(1 ~ 25 fps)
  - 4.3 ~ 129mm (30x optical zoom)
  - Up to 255 presets, up to 4 auto scan, up to 4 tour, up to 4 pattern
  - Support with H.265 video compression
  - IR Range of 120 Mtr, IP66

### ENP-S2041L12

4 MP 20x IR PTZ Camera



- Features:
- 1/3" 4MP CMOS Image Sensor
  - 4MP @(1 ~ 25 fps)
  - 4.7 ~ 94mm (20x optical zoom)
  - Up to 255 presets, up to 4 auto scan, up to 4 tour, up to 4 pattern
  - Support with H.265 video compression
  - IR Range of 120 Mtr, IP66, IRCUT, 1 Audio In/ 1 Audio Out



# the portfolio



**CP-ENR-1404/1408/1416**

4/8/16 Ch.. Network Video Recorder



- Features:
- 4/8/16 Ch.. Video, 1 Ch.. Audio
  - 4Ch.\*1080P / 8 Ch..\*1080P / 16 Ch..\*4MP Recording
  - 1 SATA port, 2 USB, 1 RJ45
  - HDMI / VGA simultaneous video output
  - Support with H.264 video compression
  - Mobile Software: RMOB, CMS
  - Software:RVMS
  - Without Hard disk

**CP-ENR-2408/2416/2432**

8/16/32 Ch.. Network Video Recorder



- Features:
- 8/16/32 Ch.. Video, 1 Ch.. Audio
  - 8 Ch.\*1080P / 16 Ch.\*4MP/8 Ch.\*5MP / 8 Ch.\*5M/16 Ch.\*4M/32 Ch.\*1080P
  - 2 SATA port, 2 USB, 1 RJ45
  - HDMI / VGA simultaneous video output
  - Support with H.264 video compression
  - Mobile Software: RMOB, CMS
  - Software:RVMS
  - Without Hard disk

**CP-ENR-4432**

32 Ch.. Network Video Recorder



- Features:
- 32 Ch.. Video, 1 Ch.. Audio
  - 32 Ch.\*1080P/16 Ch.\*4MP/8 Ch.\*5MP
  - 4 SATA port, 3 USB, 1 RJ45
  - HDMI / VGA simultaneous video output
  - Support with H.264 video compression
  - Mobile Software: RMOB, CMS
  - Software:RVMS
  - Without Hard disk

**CP-ENR-8432**

32 Ch.. Network Video Recorder



- Features:
- 32 Ch.. Video, 1 Ch.. Audio
  - 32 Ch.\*1080P/16 Ch.\*4MP/8 Ch.\*5MP
  - 8 SATA port, 3 USB, 1 RJ45
  - HDMI / VGA simultaneous video output
  - Support with H.264 video compression
  - Mobile Software: RMOB, CMS
  - Software:RVMS
  - Without Hard disk

**CP-ENR-1504/1508**

4/8 Ch.. Network Video Recorder



- Features:
- 4/8 Ch.. Video
  - 4CH\*5MP/4CH\*4MP / 8 Ch.\*4MP/4CH\*5MP
  - 1 SATA port, 2 USB, 1 RJ45
  - HDMI / VGA simultaneous video output
  - Support with H.265/H.264 video compression
  - Mobile Software: RMOB, CMS
  - Software:RVMS
  - Without Hard disk

**CP-ENR-2508/2516**

8/16 Ch.. Network Video Recorder



- Features:
- 8/16 Ch.. Video
  - 8 Ch.\*4MP/4CH\*5MP / 16 Ch.\*4MP/8 Ch.\*5MP
  - 2 SATA port, 2 USB, 1 RJ45
  - HDMI / VGA simultaneous video output
  - Support with H.265/H.264 video compression
  - Mobile Software: RMOB, CMS
  - Software:RVMS
  - Without Hard disk

**CP-ENR-2532**

32 Ch.. Network Video Recorder



- Features:
- 32 Ch.. Video, 1 Ch.. Audio
  - 32 Ch.\*4MP/24CH\*5MP
  - 2 SATA port, 2 USB, 1 RJ45
  - HDMI / VGA simultaneous video output
  - Support with H.265/H.264 video compression
  - Mobile Software: RMOB, CMS
  - Software:RVMS
  - Without Hard disk

**CP-ENR-4516/4532**

16/32 Ch.. Network Video Recorder



- Features:
- 16/32 Ch.. Video, 1 Ch.. Audio
  - 16 Ch.\*4MP/8 Ch.\*5MP / 32 Ch.\*4MP/24CH\*5MP
  - 4 SATA port, 3 USB, 1 RJ45
  - HDMI / VGA simultaneous video output
  - Support with H.265/H.264 video compression
  - Mobile Software: RMOB, CMS
  - Software:RVMS
  - Without Hard disk

**CP-ENR-8532**

32 Ch.. Network Video Recorder



- Features:
- 32 Ch.. Video, 1 Ch.. Audio
  - 32 Ch.\*4MP/24CH\*5MP
  - 8 SATA port, 3 USB, 1 RJ45
  - HDMI / VGA simultaneous video output
  - Support with H.265/H.264 video compression
  - Mobile Software: RMOB, CMS
  - Software:RVMS
  - Without Hard disk

**CP-ENR-8564**

64 Ch.. Network Video Recorder



- Features:
- 64 Ch.. Video, 1 Ch.. Audio
  - 2CH\*5M/36CH\*4M/64CH\*1080P
  - 8 SATA port, 3 USB, 1 RJ45
  - HDMI / VGA simultaneous video output
  - Support with H.265/H.264 video compression
  - Mobile Software: RMOB, CMS
  - Software:RVMS
  - Without Hard disk

the portfolio





**CP-ER-T0404E1**

4 Ch. IntelliEye DVR kit



► Features:

- 4 Ch. Video, 4 Ch. Audio
- 1080N@ (1 ~ 25fps)
- 1 SATA HDD Port upto 8 TB, 2 USB
- Mobile Software: RMOB, CMS Software: RVMS
- Without Hard disk

**CP-ER-T0804E1**

8 Ch. IntelliEye DVR kit



► Features:

- 8 Ch. Video, 4 Ch. Audio
- 1080N@ (1 ~ 25fps)
- 1 SATA HDD Port upto 8 TB, 2 USB
- Mobile Software: RMOB, CMS Software: RVMS
- Without Hard disk

**CP-ER-T1602E1**

16 Ch. IntelliEye DVR kit



► Features:

- 16 Ch. Video, 2 Ch. Audio
- 1080N@ (1 ~ 25fps)
- 1 SATA HDD Port upto 8 TB, 2 USB
- Mobile Software: RMOB, CMS Software: RVMS
- Without Hard disk

**CP-KEC-H2D1**

Intelli EYE Camera Kit



► Features:

- 2MP 1xDome
- HDX Image Sensor
- 3.6mm Lens
- 2MP @ (1 ~ 25fps)
- Without Hard disk

**CP-KEC-H2T1**

Intelli EYE Camera Kit



► Features:

- 2MP 1xBullet
- HDX Image Sensor
- 3.6mm Lens
- 2MP @ (1 ~ 25fps)
- Without Hard disk

**CP-KEC-H2DT11**

Intelli EYE Camera Kit



► Features:

- 2MP 1xDome, 1xBullet, 1xPower Supply Unit
- 2mAh, 2x18Mtrs Cable(Power + Video)
- HDX Image Sensor
- 3.6mm Lens
- 2MP @ (1 ~ 25fps)
- Without Hard disk



the portfolio



### CP-SMR-H0401-S02

4 Ch. WD1 + 1 Ch. 1080P H.264 Mobile DVR



- Features:
- Supports 4 channels WD1 + 1 channel 1080P
  - Supports SD Card for main recording
  - Supports GPS for location tracking
  - Supports Wi-Fi for video files download
  - Built-in 3G/4G for live view and remote management

### CP-SM-H0401-S02

4 Ch. AHD H.264 Mobile DVR



- Features:
- Supports 4 channels AHD1 + 1 channel 1080P
  - Supports SD Card for main recording
  - Supports GPS for location tracking
  - Supports Wi-Fi for video files download
  - Built-in 3G/4G for live view and remote management
  - Supports 360degree anti-vibration
  - Supports data recovery technology
  - Supports USB2.0 high speed backup

### CP-SMR-H0401-S10

4 Ch. WD1 H.264 Mobile DVR



- Features:
- Supports 4 channels WD1 + 1 channel 1080P
  - Supports Hard Disk for main recording
  - Supports GPS for location tracking
  - Supports Wi-Fi for video files download
  - Built-in 3G/4G for live view and remote management(Optional)

### CP-SM-H0401-S10

4 Ch. AHD H.264 Mobile DVR



- Features:
- Supports 4 channels AHD1 + 1 channel 720P
  - Supports Hard Disk for main recording
  - Supports GPS for location tracking
  - Supports Wi-Fi for video files download (Optional)
  - Built-in 3G/4G for live view and remote management (Optional)
  - Vibration-resistant design to meet various environment needs
  - Supports USB2.0 high speed backup
  - Pre-recording max. 60 mins

### CP-SMR-H0402-S11

4 Ch. WD1 + 2 Ch. 720P H.264 Mobile DVR



- Features:
- Supports 4 channels WD1 + 2 channels 720P
  - Supports Hard Disk for main recording
  - Supports GPS for location tracking
  - Supports Wi-Fi for video files download
  - Built-in 3G/4G for live view and remote management

### CP-SMR-H0804-S11

8 Ch. WD1 H.264 Mobile DVR



- Features:
- Supports 8 ch WD1 + 4 ch IPC (720P) or 4 ch WD1 8 ch IPC (720P)
  - Built-in 3G for live view and remote monitoring
  - Supports 2.5" 2TB hard disk storage and SD card for mirror recording
  - Built-in GPS
  - Built-in G-sensor, Built-in heater (optional)

### CP-SMR-75TM

Multi-Function Touch Panel



### CP-SMR-MLEDP

Mini LED Panel



### CP-SMR-RHD

Removable HDD Case



### CP-SMR-GPS

GPS Module



### CP-SMR-3GWCD

3G GSM Module(HSPA)



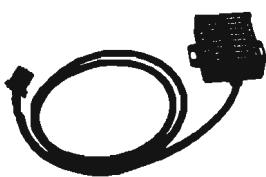
### CP-SMR-Wi-Fi

Wi-Fi Module



### CP-SMR-Alarm

Alarm Box



### CP-SMR-DINB

DIN Jack to BNC convertor Cable-Male/Female



### CP-SMR-AI2

Audio Intercom Microphone



### CP-QMC-Y60ML2

Color IR Mobile Camera -20Mtr.



- Features:
- 1/3"Sony Super HAD II CCD
  - 600TVL Resolution
  - Min Illumination: 0.01lux
  - 2.8mm Lens
  - IR Range of 20Mtr with 18 LEDs
  - OSD, 2D-DNR & LSC supported

### CP-QMC-C70AL2

High Resolution IR Vandal Camera - 20Mtr.



- Features:
- High Quality Image Sensor
  - 700TVL High Resolution
  - 0.01 lux Min. Illumination
  - 2.8mm Lens (3.6mm Optional)
  - IR Range of 20Mtr. with 12 IR LEDs
  - With Audion, AGC, AWB and BLC
  - CE, FCC and RoHS Certified

### CP-SC-HD13L2

1.3 MP HD IR Mobile Dome Camera - 20Mtr.



- Features:
- 1/3" 1.3MP PS CMOS Image Sensor
  - Max 25fps@1.3MP
  - H.264 and MJPEG dual-stream encoding
  - Easy assembly and disassembly, lockable angle and anti-vibration
  - 3.6mm fixed lens (2.8mm, 6mm optional)
  - IR Range of 20 Mtr.
  - Audio band-pass filter (optional): reduce vibration noise of vehicle engine and frame
  - Anti-jamming and low power design: avoid vehicle circuit interface, support high temperature on Vehicle roof

### CP-SNP-3013MPL10

1.3 MP Full HD IP Mobile Positioning System



- Features:
- 1/3" Progressive Scan CMOS Image Sensor
  - 1.3MP Image Quality
  - Powerful 30x Optical Zoom
  - Pan range: 360° endless, speed up to 60°/s
  - Up to 256Presets, 4Tour, 4Pattern, 4Auto scan
  - IR Distance up to 100 Mtr., IP66
  - Supports dual-stream and HD capture
  - Anti-vibration design

### CP-SNP-3020MPL10

2 MP Full HD IP Mobile Positioning System



- Features:
- 1/3" Progressive Scan CMOS Image Sensor
  - 2MP Image Quality
  - Powerful 30x Optical Zoom
  - Pan range: 360° endless, speed up to 60°/s
  - Up to 256Presets, 4Tour, 4Pattern, 4Auto scan
  - IR Distance up to 100 Mtr., IP66
  - Supports dual-stream and HD capture
  - Anti-vibration design



### EPK-HC10L1

1MP IR Pan/Tilt Camera - 10 Mtr.



- Features:
- 1 Megapixel CMOS Image Sensor
  - Max 25/30fps@720P(1280×720)
  - Supports Micro SD Card Upto 128 GB, Supports Wi-Fi
  - Two way communication
  - IR Range of 10 Mtr.

### EPK-HP10L1

1MP IR Pan/Tilt Camera - 10 Mtr.



- Features:
- 1 Megapixel CMOS Image Sensor
  - Max 25/30fps@720P(1280×720)
  - Supports Micro SD Card Upto 128 GB, Supports Wi-Fi
  - Two way communication, 360° HD PAN/TILT
  - IR Range of 10 Mtr.

### EPK-EC10L1

1MP IR Cube Camera - 10 Mtr.



- Features:
- 1 Megapixel CMOS Image Sensor
  - Max 25/30fps@720P(1280×720)
  - Supports Micro SD Card Upto 128 GB, Supports Wi-Fi
  - Two way communication
  - IR Range of 10 Mtr.

### EPK-EP10L1

1MP IR Pan/Tilt Camera - 10 Mtr.



- Features:
- 1 Megapixel CMOS Image Sensor
  - Max 25/30fps@720P(1280×720)
  - Supports Micro SD Card Upto 128 GB, Supports Wi-Fi
  - Two way communication, 360° HD PAN/TILT
  - IR Range of 10 Mtr.

## Video Door Phone

### CP-RVK-41K

4.3" Hands free Color Video Door phone Kit



- Features:
- 4.3" color TFT-LCD display
  - Super Slim & Elegant Design, Hand free Operation & Video Intercom
  - Door Unlocking & Monitoring Camera, Option of connecting 1 Analog CCTV Camer
  - IR LED'S for Night Vision, Weather/Vandal-Proof Outdoor unit

### CP-RVK-71K

7" Hands free Color Video Door phone Kit



- Features:
- 7" color TFT-LCD display
  - Super Slim & Elegant Design, Hand free Operation & Video Intercom
  - Door Unlocking & Monitoring Camera, Option of connecting 1 Analog CCTV Camer
  - IR LED'S for Night Vision, Weather/Vandal-Proof Outdoor unit

### CP-RVK-42K

4.3" Hands free Color Video Door phone Kit



- Features:
- 4.3" color TFT-LCD display
  - Super Slim & Elegant Design, Hand free Operation & Video Intercom
  - Door Unlocking & Monitoring Camera, Option of connecting 1 Analog CCTV Camer
  - IR LED'S for Night Vision, Weather/Vandal-Proof Outdoor unit

### CP-RVK-72K

7" Hands free Color Video Door phone Kit



- Features:
- 7" color TFT-LCD display
  - Super Slim & Elegant Design, Hand free Operation & Video Intercom
  - Door Unlocking & Monitoring Camera, Option of connecting 1 Analog CCTV Camer
  - IR LED'S for Night Vision, Weather/Vandal-Proof Outdoor unit



**CP-VTA-T2324-U**

Fingerprint Access Control



► Features:

- LCD: 2.8" TFT Color Display, Hardware Platform: WS307
- Fingerprint capturing: Optical Sensor, Failed Recognition Rate: < -0.0001%, False Acceptance Rate: < -0.01%
- Recognition Speed: < 1s Recognition ways: 1:1, 1:N, Fingerprint capacity: 1000, EM Lock Supported
- Management Record Capacity:1000, Storage Capacity:100000, Identification mode: Fingerprint, Password
- Communication: USB Flash Drive, USB host, TCP/IP
- Permissions:50 open time, 5 groups, 10 kinds of combination to open the door.

**CP-VTA-T2124-C**

Fingerprint Access Control with EM Card



► Features:

- LCD: 2.8" TFT Color Display, Hardware Platform: WS307
- Fingerprint capturing: Optical Sensor, Failed Recognition Rate: < -0.0001%, False Acceptance Rate: < -0.01%
- Recognition Speed: < 1s Recognition ways: 1:1, 1:N, Fingerprint capacity: 1000, EM Lock Supported
- Management Record Capacity:1000, Storage Capacity:100000, Identification mode: Fingerprint, Password, EM Card
- Communication: USB Flash Drive, USB host, TCP/IP
- Permissions:50 open time, 5 groups, 10 kinds of combination to open the door.

**CP-VTA-T2124-CR**

Fingerprint Time Attendance



► Features:

- LCD: 4" 480 x 320 Color Display, Hardware Platform: WS306
- Fingerprint capturing: Optical Sensor, Failed Recognition Rate: < -0.0001%, False Acceptance Rate: < -0.01%
- Recognition Speed: < 1s Recognition ways: 1:1, 1:N, Fingerprint capacity: 500, EM Lock Supported
- Management Record Capacity:1000, Storage Capacity:100000, Identification mode: Fingerprint, Password, EM Card
- Communication: USB Flash Drive, USB host, TCP/IP
- Permissions:50 open time, 5 groups, 10 kinds of combination to open the door.



the portfolio



### CP-DPS-MD50-12D

Metal Case Power Supply - 5 Amp



- Features:
- 12V DC - 5 Amp
  - Short Circuit Protection
  - Override & overvoltage Protection
  - Long range Input Voltage

### CP-DPS-MD100-12D

Metal Case Power Supply - 10 Amp



- Features:
- 12V DC - 10 Amp
  - Short Circuit Protection
  - Override & overvoltage Protection
  - Long range Input Voltage

### CP-DPS-MD200-12D

Metal Case Power Supply - 20 Amp



- Features:
- 12V DC - 20 Amp
  - Short Circuit Protection
  - Override & overvoltage Protection
  - Long range Input Voltage

### CP-DPS-PA10-12D

Plastic Case Power Supply



- Features:
- Input voltage: 200-240Vac
  - Input Frequency: 50 ~ 60Hz
  - Max AC Input Current: 200mA
  - Output voltage: 12VDC
  - Output electric current: 1000MA
  - Ripple wave: (mVp-p): < 1%

### CP-VML-AC2812

1/3" Vari-focal 2.8-12mm DC A/I F1.4-C  
MP IR CS-Mount



### CP-VML-AC550

1/3" Vari-focal 5-50mm DC A/I F1.8-C MP  
IR CS-Mount



### CP-VML-AC39

1/3" Vari-focal 3-9mm DC A/I F1.8-C MP  
IR CS-Mount



### Analog Lens

### CP-AC358

Vari-Focal Lens, 3.5-8mm



### CP-AC2812

Vari-Focal Lens, 2.8-12mm,



### CP-AC550

Vari-Focal Lens, 5-50mm



### CP-MC358

Vari-Focal Lens, 3.5-8mm



### IR Illuminator

### CP-CRN-L201E

220 Meter High Range IR Illuminator



### Housing

### CP-CRN-L104E

100 Meter High Range IR Illuminator



### CP-CRC-L34/52E

30/50 Meter Range IR Illuminator Camera Housing



### CP-HB55HF-TU

Outdoor housing with Heater and blower



### CP-FCC-90/180R

3+1 Coaxial cable 90/180m Roll



the portfolio


# **CP PLUS**

Corp. office: Aditya Infotech Ltd.

A-12, Sector - 4, Noida - 201301, Delhi NCR, India.

CIN No.: U74899DL1995PLC066784

[www.cpplusworld.com](http://www.cpplusworld.com) | [sales@cpplusworld.com](mailto:sales@cpplusworld.com)

 **1800 103 0806**  
**1860 500 3344**

