

# HDR-8x8-XT

4K Ultra-HD 8X8 HDBaseT HDMI Matrix with POE



Distribute eight 4K HDMI sources to eight local monitors and eight remote displays via HDBaseT (CAT5e/6/7) with IR and TCP/IP control support.

## FEATURES

- Up to 4K (3840x2160 @30Hz) Resolution
- (8) HDMI Input
- (8) HDMI Local Output
- (8) HDMI HDBaseT Output (over CAT5e/6/7)
- Supports Power-over-Ethernet (POE)
- HDBaseT signal extension up to 328 ft
- Ethernet routing: connect output displays to internet via CAT5e/6/7 HDBaseT.
- HDMI 1.4 & HDCP Compliant
- Route RS-232 control to remote monitors
- Supports bi-directional IR remote control
- Supports TCP/IP Web Console control
- EDID learning & management
- Supports HDX-POE receivers: Video & IR extension (sold separately)
- Supports HDX-POE-PRO receivers: video, IR, RS-232, and Ethernet extension (sold separately)

## APPLICATIONS

- Sports Arenas
- Concert Halls
- Cinemas & Multiplex Theaters
- Convention Centers
- Hotel Lobbies
- Transportation Hubs (Airports, Train Stations)
- Lecture Halls & Auditoriums
- and more!

**4K/2K**

MEMBER OF  
**((HDCP))**  
GROUP

**Smart-AVI**  
SMART AUDIO VIDEO INNOVATION

## OVERVIEW

The HDR-8x8-XT is an 8x8 matrix switch that sends 4K (3840x2160 @30Hz) HDMI signals to output devices up to 328 ft away with HDBaseT CAT5/6/7 extension.

Ideal for large venues with multiple 4K-ready screens, the HDR-8x8-XT offers unmatched performance and quality over considerable distances. Arenas, movie theaters, concert venues, nightclubs, event halls, convention centers, and more are all perfect environments for the HDR-8x8-XT.

Controlling the HDR-8x8-XT is both easy and flexible! The matrix features simple front-panel buttons for direct switching and bi-directional IR remote control. The HDR-8x8-XT can also be controlled using a TCP/IP web console accessible by PC when connected to the matrix over Ethernet. No matter the application or environment, the HDR-8x8-XT is always accessible and in command.

Featuring HDBaseT Power-over-Ethernet support, the HDR-8x8-XT powers connected receiver units (like the HDX-POE) through CAT5e/6/7 cables, cutting costs and power consumption. It also features EDID learning and HDCP management for easy set-up!

For powerful matrix routing without the hassle of complicated extension, turn to HDR-8x8-XT 4K 8x8 HDBaseT matrix today!

## The 4K Advantage

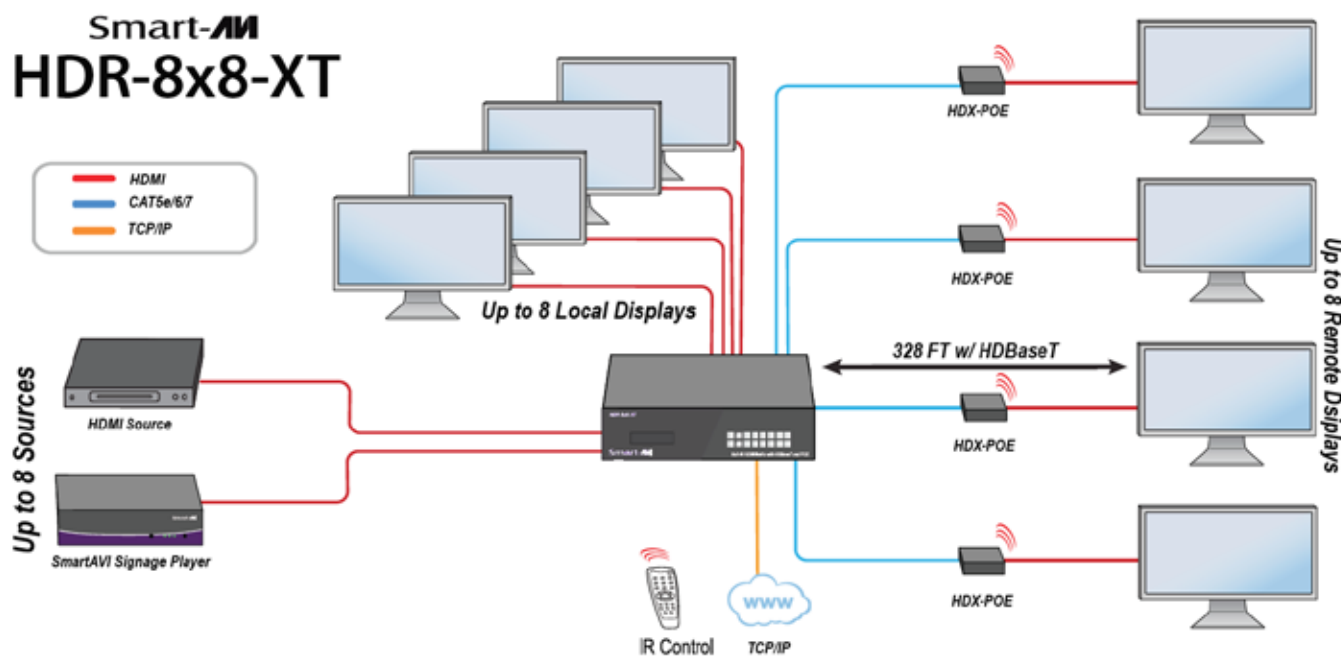
Ideal for large-scale screens and projectors, 4K ultra-HD video content is quickly gaining ground as the go-to in visual presentation.

Outfitted with 4K-ready HDMI connectors, the HDR-8x8-XT lives up to its label, delivering the pinnacle in image clarity and performance. At 3840x2160, 4K resolution is terrific for displaying elaborate dioramas and scenes of all kinds. From movies to live events, 4K video entralls an audience and brings what they are watching to life in vivid detail!

## Ethernet Routing

The HDR-8x8-XT connects up to eight smart TVs to the internet via HDBaseT Ethernet switch, saving users valuable setup costs and times otherwise spent on hooking each display up to separate internet routers. Keep your displays web-connected and convenient with the HDR-8x8-XT!

## APPLICATION DIAGRAM



# CONTROL VIA ETHERNET

HDR-8X8-XT TCP/IP control is a feature that allows source / display switching, EDID configuration and Network settings to be controlled remotely via HTTP. Manage your HDR-8X8-XT with ease from anywhere in the world.

Make sure the HDR-8X8-XT RJ45 PC Control port is connected to your network.

First you must find the IP address. Download the HDR-8X8-XT IP-Finder2 software from <http://smartavi.com/helpful-links.html>

Once you have unzipped it onto your PC, execute the software and you should see a window like the one shown in Figure 9-1.

Click the [Search Device] button. The IP address for the HDR-8X8-XT should appear.

Enter the IP address into a web browser of your choice. You should see the HDR-8X8-XT Matrix Control Page as shown in Figure 9-2.

Figure 9-1

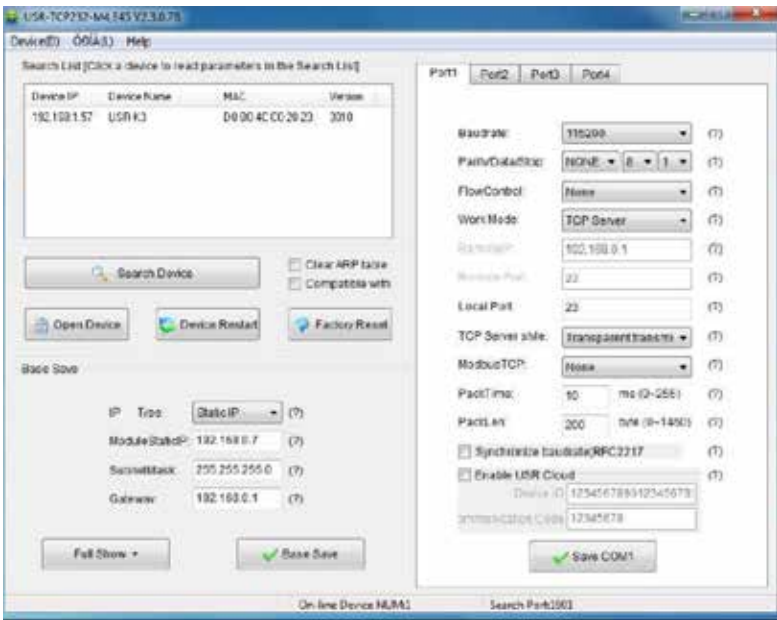
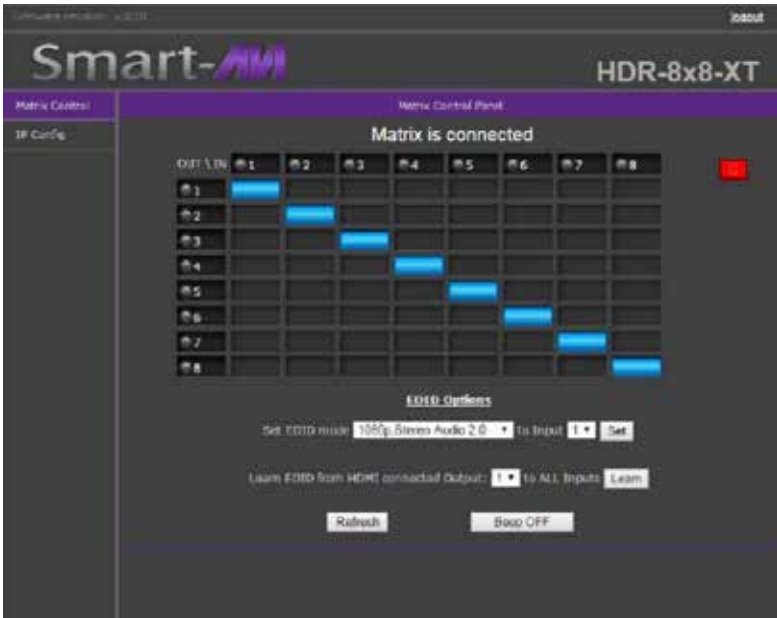


Figure 9-2



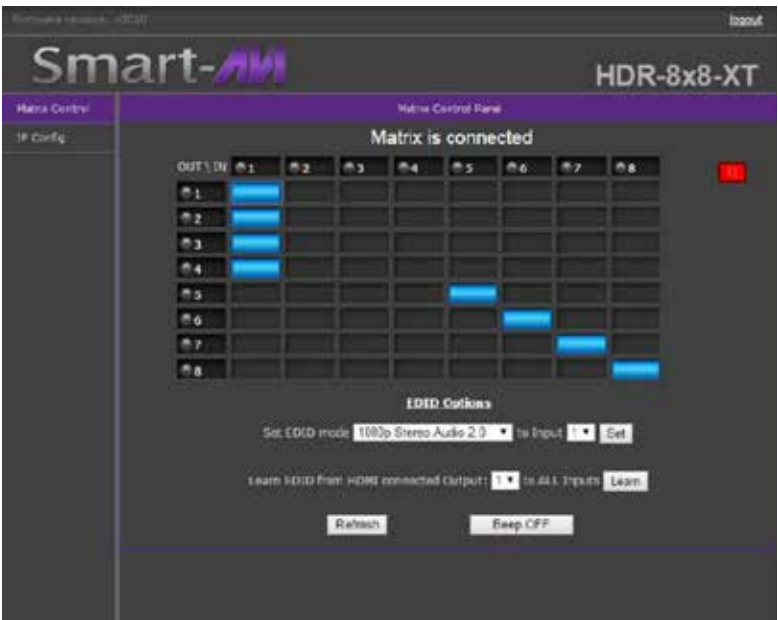
CONTROL VIA ETHERNET

The Matrix Control Page is where you switch inputs to outputs. The column running top to bottom on the left shows the 8 outputs. The Top row shows the inputs or sources. Clicking the box where the input intersects the output sets the connection.

Figure 10-1 shows input or source 1 connected to outputs 1,2,3 &4. Output 5 is connected to Input 5, 6 to 6, 7 to 7 and 8 to 8.

You can also change EDID settings from the Matrix Control Page. See the EDID section of this manual for more information on EDID.

Figure 10-1

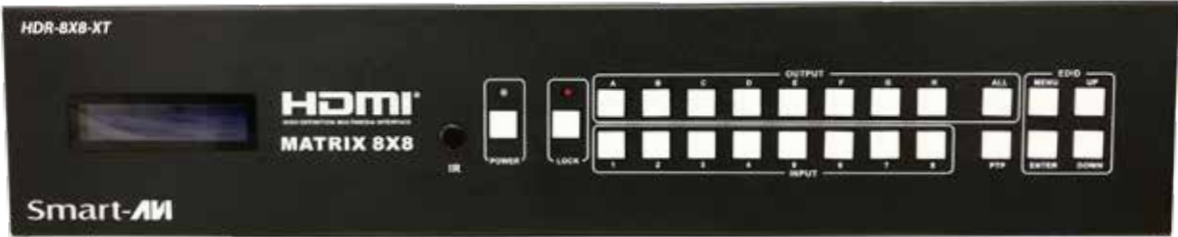


The IP Config page shown in Figure 10-2 allows you to modify the network settings.

Figure 10-2



SPECIFICATIONS



HDR-8x8-XT Front



HDR-8x8-XT Rear

VIDEO & AUDIO	
Format	HDMI 1.4
Video Bandwidth	10.2Gbps
Input	(8) HDMI
Output	(8) HDMI, (8) CAT5e/6/7, (8) 3.5mm stereo jack, (8) coaxial audio
Input Resolution	Up to 4K (3840x2160 @ 30Hz)
Output Resolution	Up to 4K (3840x2160 @ 30Hz)
HDMI Connector	Type A 19 pin female
RJ-45 Connector	WE/SS 8P8C
Audio Connectors	3.5mm, Coaxial

OTHER	
Power Supply	Internal 100-240 VAC/CCPWR06
Max Consumption	100 W
Dimensions	17" W x 14.6" H x 4.0" D
Weight	14.9 lbs. Unit only
Approvals	UL, CE, ROHS Compliant
Operating Temp.	32 to +104°F
Storage Temp.	-4 to +140°F
Humidity	Up to 90% RH (non-condensing)

CONTROL	
Front Panel	Front panel buttons
IR	Infrared Remote Control
TCP/IP Control	via Ethernet-connected computer

ORDERING INFORMATION	
Part No.	Description
HDR-8x8-XT-S	4K-Ready 8x8 HDMI Matrix with CAT5/6/7 HDBaseT, Includes: [HDR-8x8-XT, IR Remote & (CCPWR06)]