

4K DisplayPort/HDMI PCIe Graphics Card, 6-Output SPLITMUX®

Display 4Kx2K UHD video across six DisplayPort/HDMI monitors. Create video walls up to 3x2.

- Drive six displays from one single-slot PCIe 3.0 x16 graphics card.
 - Six active mini DisplayPort outputs provide maximum AMD Eyefinity technology support.
 - Independent resolutions, refresh rates, color controls, and video overlays.
 - Each monitor can display a different program/browser – just drag and drop to the monitors.
- Supports resolutions up to Ultra-HD 4Kx2K 4:4:4 per output.
 - Max resolution using DisplayPort monitors: 3840x2160@60Hz
 - Max resolution using HDMI monitors: 3840x2160 and 4096x2160 @30Hz
- Create video wall configurations with displays in landscape or portrait orientations.
 - Landscape (horizontal) orientation:
 - ♦ AMD Eyefinity: 1x1, 1x2, 1x3, 1x5, 2x1, 2x2, 3x1, 3x2, 4x1, 5x1
 - ♦ Microsoft Windows: 1x1, 1x2, 1x3, 1x4, 1x5, 1x6, 2x1, 2x2, 2x3, 3x1, 3x2, 4x1, 5x1, 6x1
 - Portrait (vertical) orientation:
 - ♦ AMD Eyefinity: 1x1, 1x2, 1x3, 1x5, 2x1, 2x2, 3x1, 5x1
 - ♦ Microsoft Windows: 1x1, 1x2, 1x3, 1x4, 1x5, 1x6, 2x1, 2x2, 2x3, 3x1, 3x2, 4x1, 5x1, 6x1
- Versatile bezel compensation ability accommodates any screen frame width, and allows for accurate display of the image.
- Clone content to show the same information on all displays.
- 4GB of GDDR5 memory provides smooth video playback and graphics performance.
- Compliant with DisplayPort v1.2 specifications.
- HDCP compliant.
- Any HDMI display can be connected by using the DPMM-HD4K18GBF adapter cable (not included).
- Ideal for a wide range of digital signage applications, including: retail stores, restaurants, corporate lobbies, entertainment venues, trade shows, airports, and more.



PCIe3-4K18GB-6VW

- **6-output PCIe 3.0 x16 graphics card**
- **4GB of GDDR5**
- **Create video walls up to 3x2**

The PCIe3-4K18GB-6VW 4K DisplayPort/HDMI PCIe Graphics Card drives six monitors from a single slot on a PC with resolutions up to Ultra-HD 4Kx2K 60Hz 4:4:4 per output. It enables the user to create video walls up to 3x2. Additionally, it can be used as a video splitter.

Specifications

- GPU: AMD Radeon R7 360
- GPU Core Clock: 900Mhz
- Memory: 4GB GDDR5
- Bus Type: PCIe 3.0 x16
- Video Output: 6 female mini DisplayPort 1.2
- Maximum Resolution (per monitor):
 - Using DisplayPort monitors: 3840x2160@60Hz
 - Using HDMI monitors: 3840x2160 and 4096x2160 @30Hz
- Video Bandwidth: 21.6 Gbps
- HDCP compliant
- Supports LPCM, AC-3, AAC, Dolby TrueHD and DTS Master Audio formats.
 - DDM audio.
 - 7.1-channel audio bitstreaming via HDMI or DisplayPort.
- APIs Supported: DirectX 12, OpenGL 4.5, Vulkan, Mantle, Open CL 1.2

Dimensions

- WxDxH (in): 4.98x8.67x0.76 (126x220x19 mm).
- Form Factor: ATX

Regulatory Approvals

- RoHS

System Requirements

- PCIe-based PC with one X16 lane graphics slot available on the motherboard.
- System Power Supply Required: 500W
- Operating Systems Supported:
 - Windows 10 64-bit
 - Windows 8.1 64-bit
 - Windows 7 64-bit
 - Linux x86 32/64-bit
 - RHEL x86 32/64-bit
 - Ubuntu x86 32/64-bit

Cables

- Use DPM-DP-xx-MM Male Mini DisplayPort to Male DisplayPort Adapter Cable to connect a DisplayPort monitor to the graphics card.
 - Supports 4K@60Hz to 6 feet and 4k@30Hz to 15 feet.
- Use DPM-HD-6-MM Male Mini DisplayPort to Male HDMI Adapter Cable to connect an HDMI monitor to the graphics card.
 - Supports resolutions to 4K@30Hz.
- Cables not included.

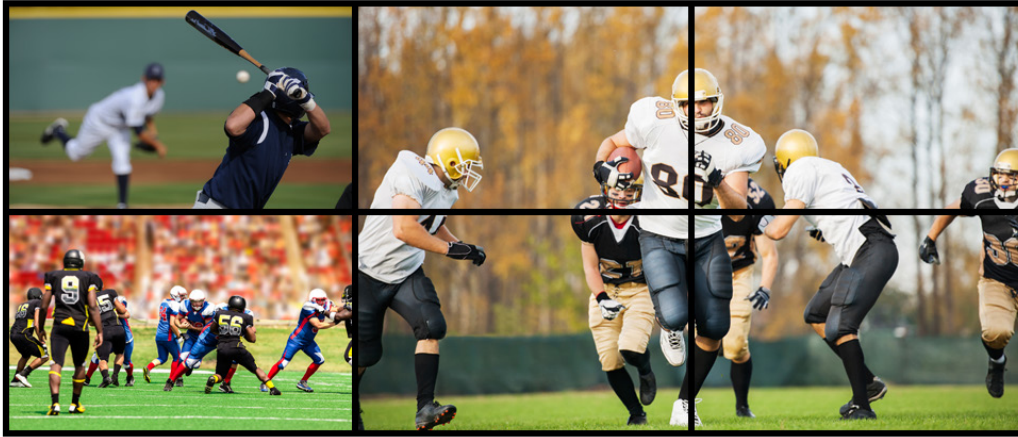
Warranty

- Two years

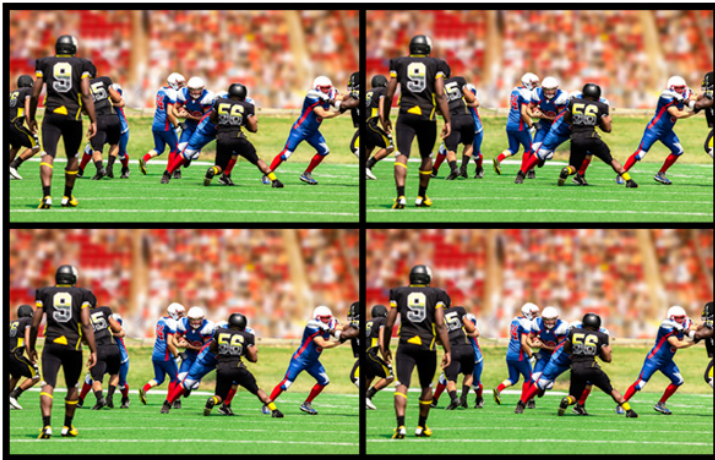
4K DisplayPort/HDMI PCIe Graphics Card, 6-Output SPLITMUX®

Display 4Kx2K UHD video across six DisplayPort/HDMI monitors. Create video walls up to 3x2.

Display Mode Examples



3x2 Video Wall



Clone Mode



Custom Video Wall Design



4x1 Video Wall